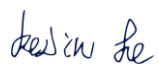



**Produkte**
*Products*

TUV Rheinland Test File No.: <b>CN25G1PT 001</b>		Page 1 of 2
Applicant: Dongguan Jingheng Electron Co., Ltd. Room 101, Building 1, No.15, Shenle 1st Road, Hengli Town, Dongguan City, 523465 Guangdong P.R. China		
Issuing Laboratory of Test Report: TÜV Rheinland (Guangdong) Ltd.		
Issuing Laboratory File/Report No. And Issue Date: CN25WRJN 001, issue date: 2025-08-01		
Equipment Type: LINE ARRAY SPEAKER SYSTEMS model: L-ARRAY 18SA, FLX 18SA, L-ARRAY 28HA, FLX 28HA, L-ARRAY 18S, FLX 18S, L-ARRAY 28H, FLX 28H		
TUV Recognition/Accepting Location: TÜV Rheinland (Shenzhen) Co., Ltd.		
Certificate Type Being Applied For: <input checked="" type="checkbox"/> NRTL (cTUV, TUVus or cTUVus) <input type="checkbox"/> T-Mark <input type="checkbox"/> Other (please specify)		
NRTL Acceptance Program: <input checked="" type="checkbox"/> Independent Organizations - NRTL Program #3 (PTL's) <small>(only complete if acceptance is for TUVus or cTUVus)</small> <input type="checkbox"/> IECCE-CB Scheme Organization without PTL status– NRTL Program #8 <small>(Note: If this box is checked, then MS-0004249 Appendix 1 needs to be completed in addition to this form)</small> <input type="checkbox"/> TRNA/SNAP issued CB report (sample was reviewed during CB process) <input type="checkbox"/> Acceptance of another NRTL's test report for the purpose of approval/transfer according to MS-0004249 and MS-0004249 Appendix 2		
Certification Test Standard(s): UL 62368-1:2019 R10.21 CSA C22.2 NO. 62368-1:19		
Acceptance/Recognition Result: <input checked="" type="checkbox"/> The submitted test report is acceptable for the noted certification scheme(s) and standard(s) <input type="checkbox"/> If a CB certificate (CBTC) and CB test report (CBTR) was submitted it was confirmed as authentic and valid according to the IECCE Online Deliverables ( <a href="#">LINK</a> )		
Reviewed and accepted by :		
Date 2025-08-13	Name Kevin He	Signature 
Note: If this reviewer is not "qualified" according to the relevant qualification matrix a qualified reviewer needs to review and sign below		
Reviewed by:		
Date 2025-08-13	Name Ramble Xie	Signature 
Comments:		

**Prüfbericht-Nr.: CN25G1PT 001**  
**Test report no.:**

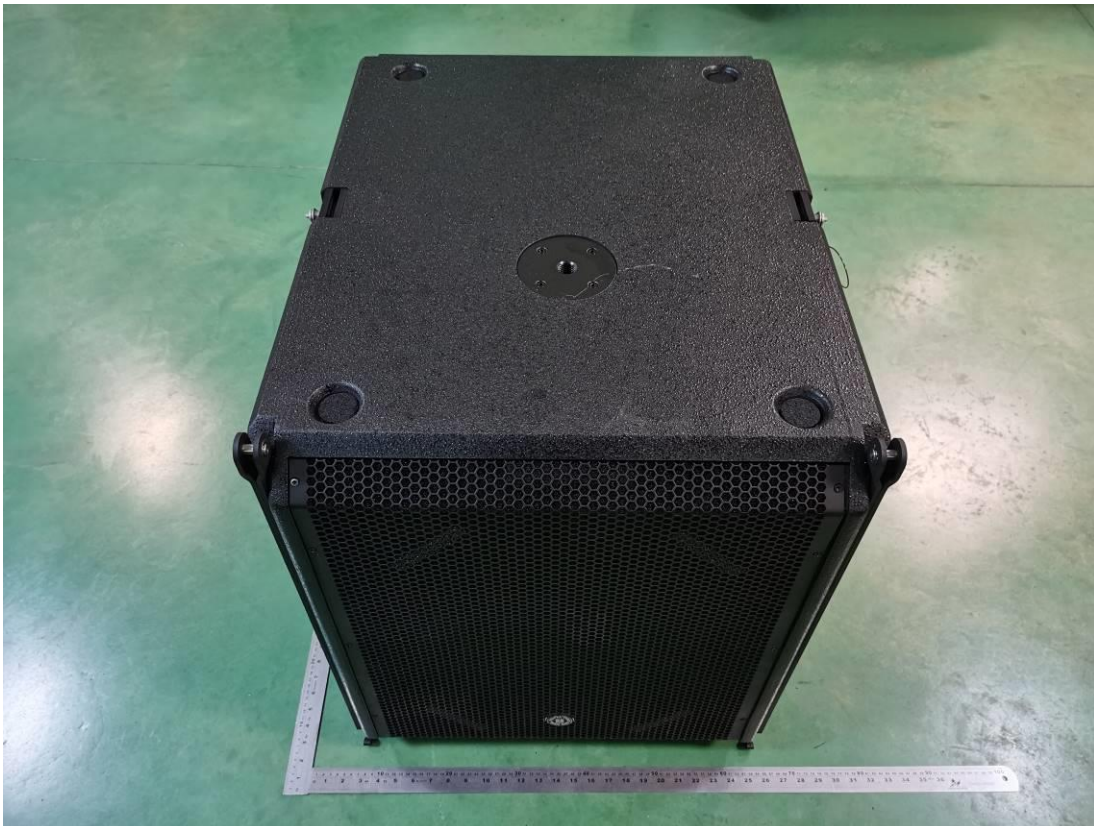
Seite 2 von 2  
Page 2 of 2

**Anmerkungen**  
*Remarks*

1	<p>Alle eingesetzten Prüfmittel waren zum angegebenen Prüfzeitraum gemäß eines festgelegten Kalibrierungsprogramms unseres Prüfhauses kalibriert. Sie entsprechen den in den Prüfprogrammen hinterlegten Anforderungen. Die Rückverfolgbarkeit der eingesetzten Prüfmittel ist durch die Einhaltung der Regelungen unseres Managementsystems gegeben. Detaillierte Informationen bezüglich Prüfbedingungen, Prüfequipment und Messunsicherheiten sind im Prüflabor vorhanden und können auf Wunsch bereitgestellt werden.</p> <p><i>The equipment used during the specified testing period was calibrated according to our test laboratory calibration program. The equipment fulfils the requirements included in the relevant standards. The traceability of the test equipment used is ensured by compliance with the regulations of our management system. Detailed information regarding test conditions, equipment and measurement uncertainty is available in the test laboratory and could be provided on request.</i></p>
2	<p>Wie vertraglich vereinbart, wurde dieses Dokument nur digital unterzeichnet. Der TÜV Rheinland hat nicht überprüft, welche rechtlichen oder sonstigen diesbezüglichen Anforderungen für dieses Dokument gelten. Diese Überprüfung liegt in der Verantwortung des Benutzers dieses Dokuments. Auf Verlangen des Kunden kann der TÜV Rheinland die Gültigkeit der digitalen Signatur durch ein gesondertes Dokument bestätigen. Diese Anfrage ist an unseren Vertrieb zu richten. Eine Umweltgebühr für einen solchen zusätzlichen Service wird erhoben. Informationen zur Verifizierung der Authentizität unserer Dokumente erhalten Sie auf folgender Webseite: <a href="http://go.tuv.com/digital-signature">go.tuv.com/digital-signature</a></p> <p><i>As contractually agreed, this document has been signed digitally only. TUV Rheinland has not verified and unable to verify which legal or other pertaining requirements are applicable for this document. Such verification is within the responsibility of the user of this document. Upon request by its client, TUV Rheinland can confirm the validity of the digital signature by a separate document. Such request shall be addressed to our Sales department. An environmental fee for such additional service will be charged. For information on verifying the authenticity of our documents, please visit the following website: <a href="http://go.tuv.com/digital-signature">go.tuv.com/digital-signature</a></i></p>
3	<p>Prüfklausel mit der Note * wurden an qualifizierte Unterauftragnehmer vergeben und sind unter der jeweiligen Prüfklausel des Berichts beschrieben. Abweichungen von Prüfspezifikation(en) oder Kundenanforderungen sind in der jeweiligen Prüfklausel im Bericht aufgeführt.</p> <p><i>Test clauses with remark of * are subcontracted to qualified subcontractors and described under the respective test clause in the report.</i> <i>Deviations of testing specification(s) or customer requirements are listed in specific test clause in the report.</i></p>
4	<p>Die Entscheidungsregel für Konformitätserklärungen basierend auf numerischen Messergebnissen in diesem Prüfbericht basiert auf der "Null-Grenzwert-Regel" und der "Einfachen Akzeptanz" gemäß ILAC G8:2019 und IEC Guide 115:2021, es sei denn, in der auf Seite 1 dieses Berichts genannten angewandten Norm ist etwas anderes festgelegt oder vom Kunden gewünscht. Dies bedeutet, dass die Messunsicherheit nicht berücksichtigt wird und daher auch nicht im Prüfbericht angegeben wird. Zu weiteren Informationen bezüglich des Risikos durch diese Entscheidungsregel siehe ILAC G8:2019.</p> <p><i>The decision rule for statements of conformity, based on numerical measurement results, in this test report is based on the "Zero Guard Band Rule" and "Simple Acceptance" in accordance with ILAC G8:2019 and IEC Guide 115:2021, unless otherwise specified in the applied standard mentioned on Page 1 of this report or requested by the customer. This means that measurement uncertainty is not taken in account and hence also not declared in the test report. For additional information to the resulting risk based of this decision rule please refer to ILAC G8:2019.</i></p>

Product: LINE ARRAY SPEAKER SYSTEMS

Type Designation: L-ARRAY 18SA, L-ARRAY 28HA, L-ARRAY 18S, L-ARRAY 28H



Picture 1. Model L-ARRAY 18SA

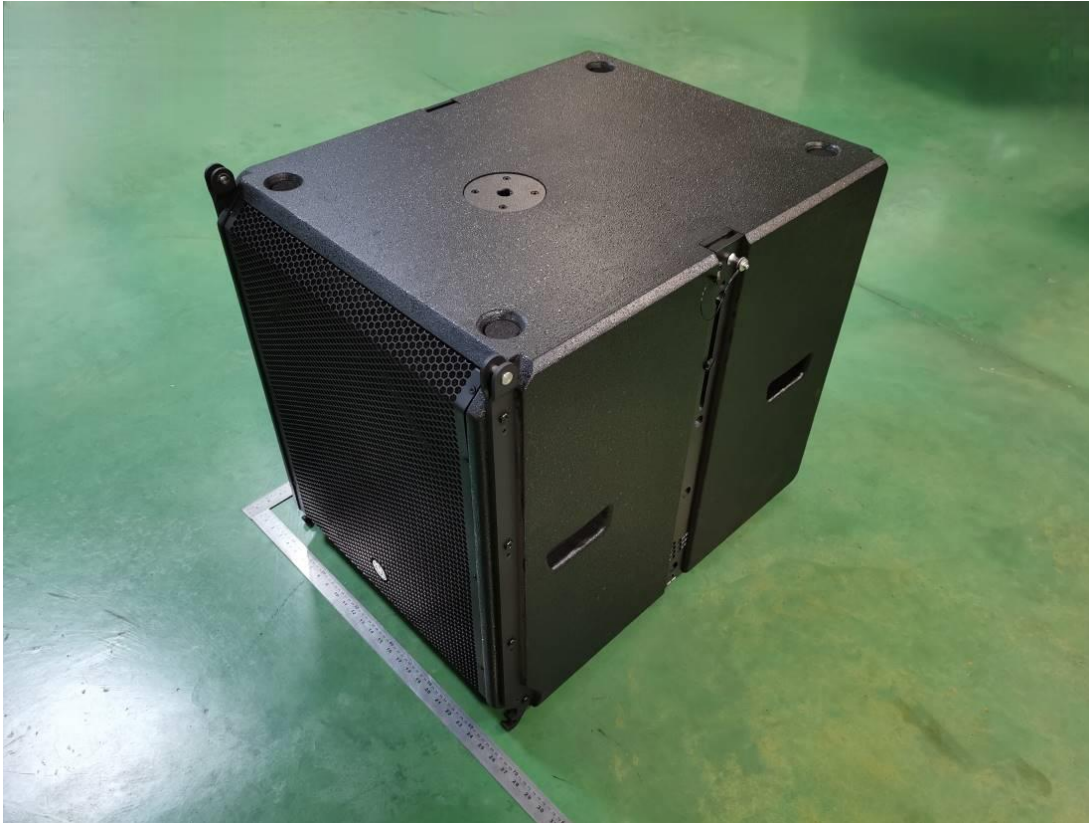


Picture 2.



Product: LINE ARRAY SPEAKER SYSTEMS

Type Designation: L-ARRAY 18SA, L-ARRAY 28HA, L-ARRAY 18S, L-ARRAY 28H



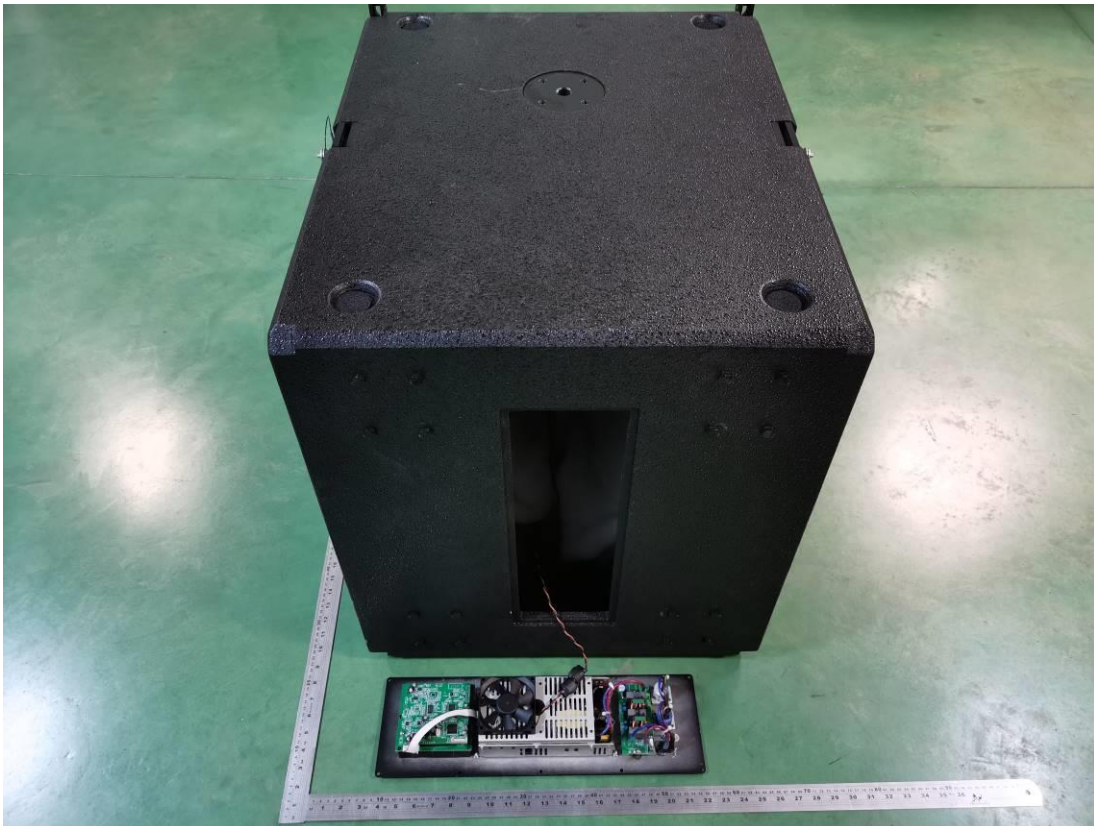
Picture 3.



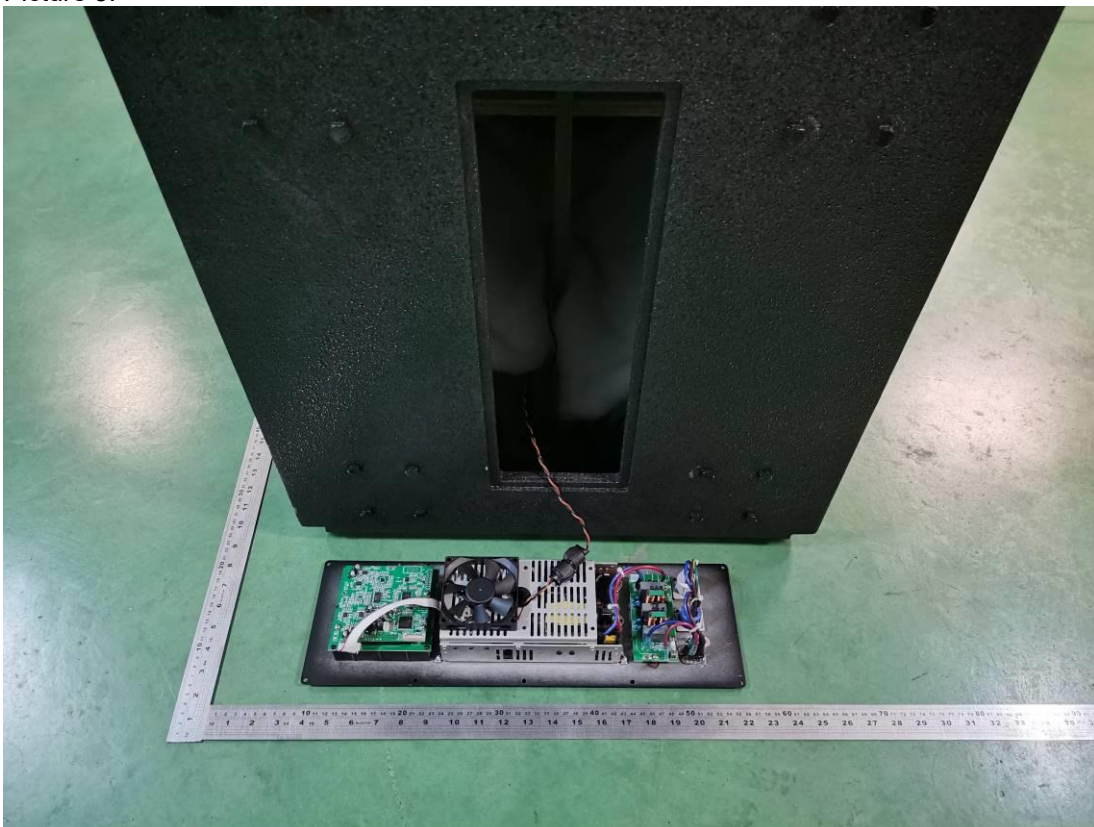
Picture 4.

Product: LINE ARRAY SPEAKER SYSTEMS

Type Designation: L-ARRAY 18SA, L-ARRAY 28HA, L-ARRAY 18S, L-ARRAY 28H



Picture 5.

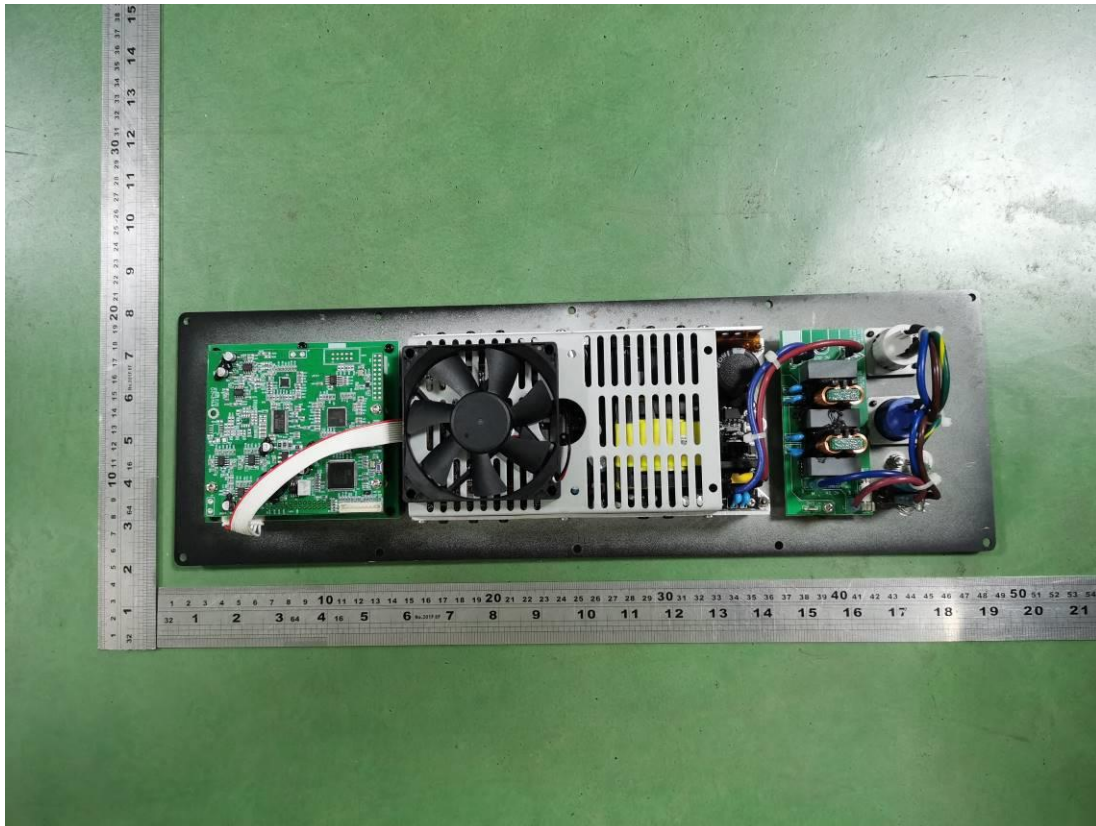


Picture 6.



Product: LINE ARRAY SPEAKER SYSTEMS

Type Designation: L-ARRAY 18SA, L-ARRAY 28HA, L-ARRAY 18S, L-ARRAY 28H



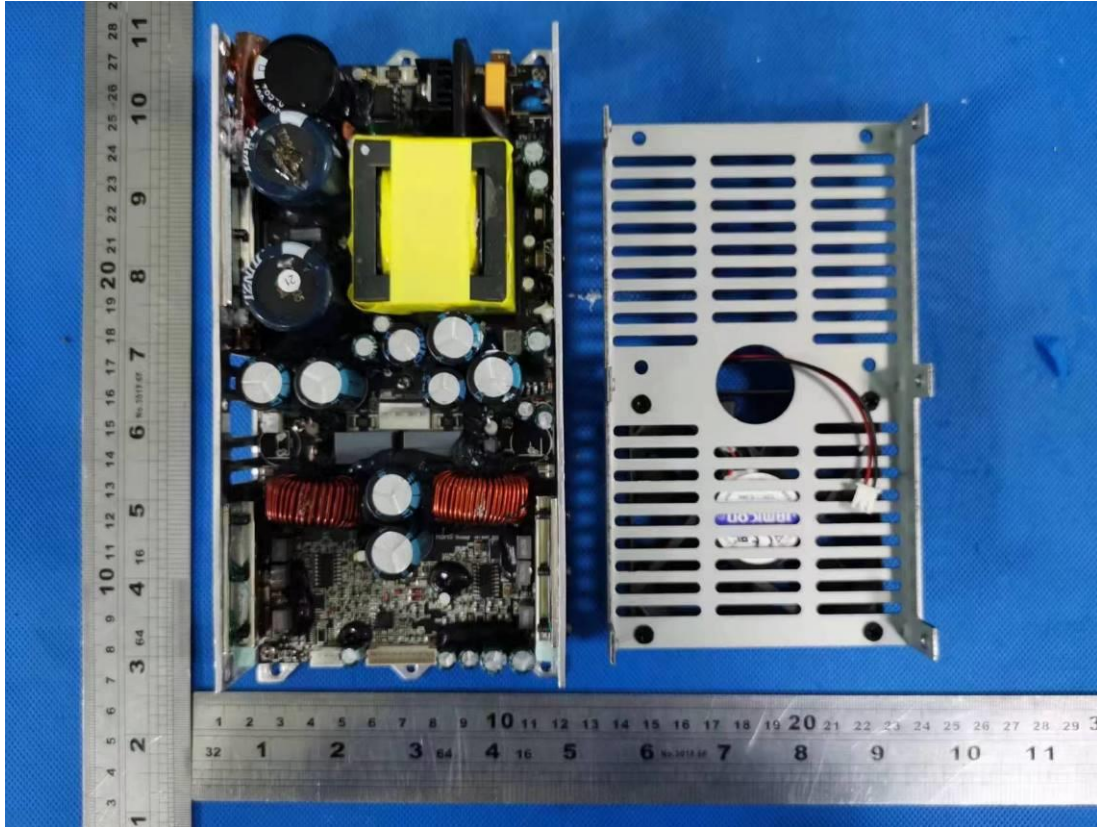
Picture 7.



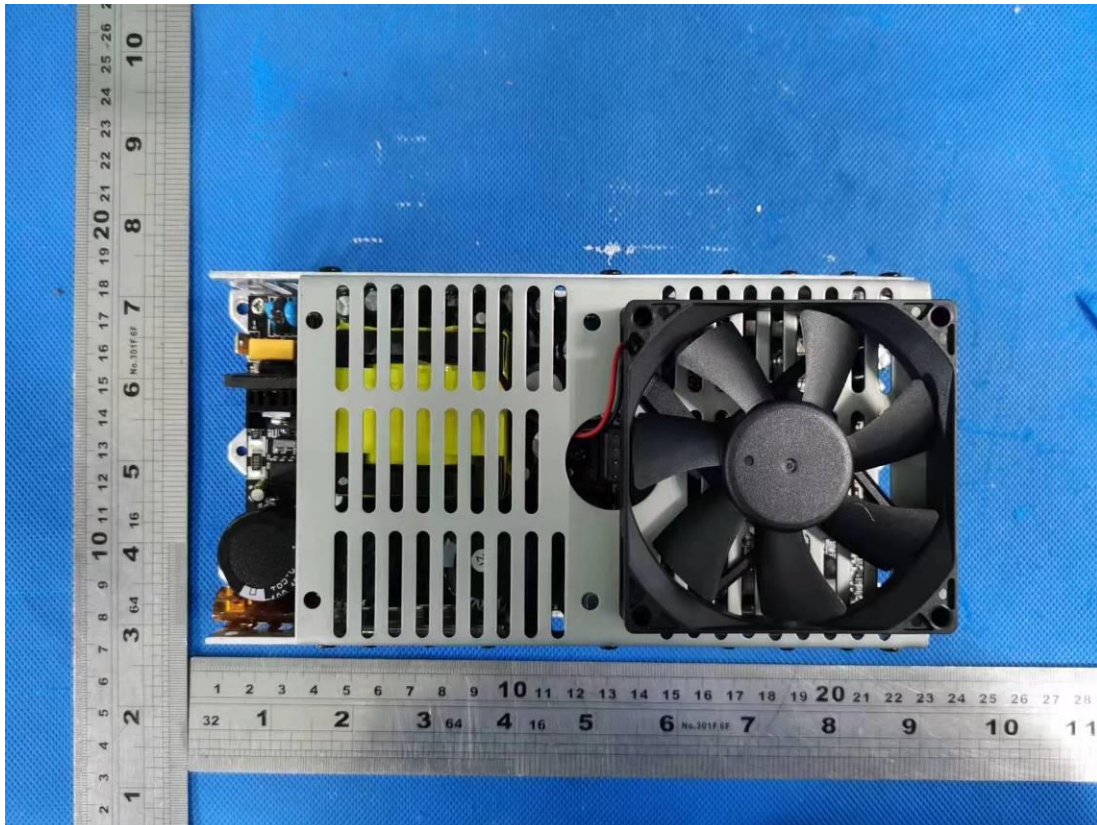
Picture 8.

Product: LINE ARRAY SPEAKER SYSTEMS

Type Designation: L-ARRAY 18SA, L-ARRAY 28HA, L-ARRAY 18S, L-ARRAY 28H



Picture 9.

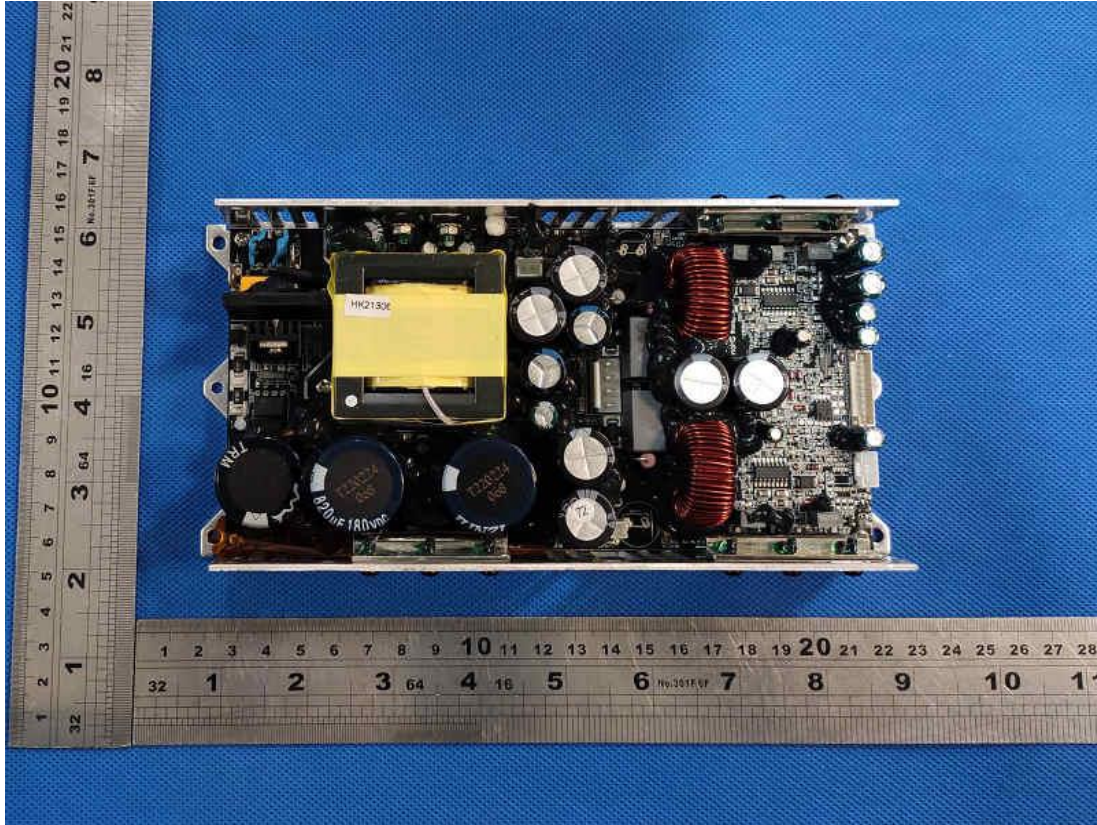




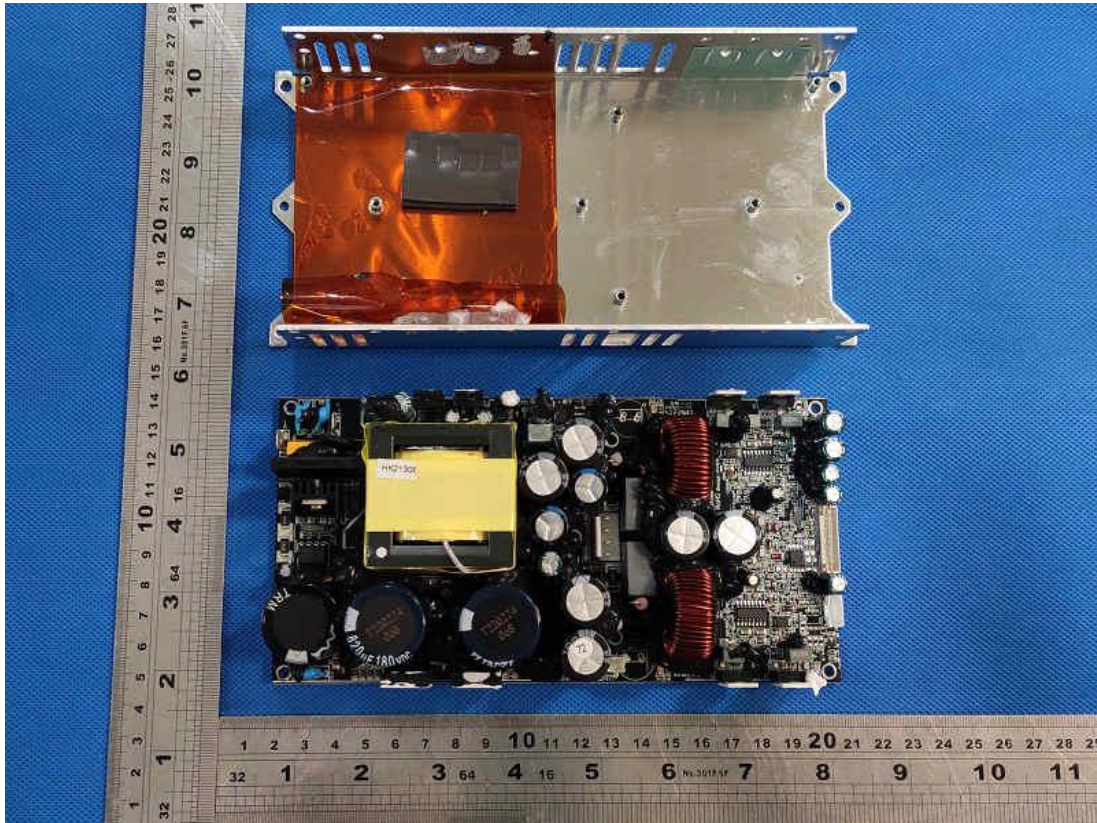
Product: LINE ARRAY SPEAKER SYSTEMS

Type Designation: L-ARRAY 18SA, L-ARRAY 28HA, L-ARRAY 18S, L-ARRAY 28H

Picture 10.



Picture 11.

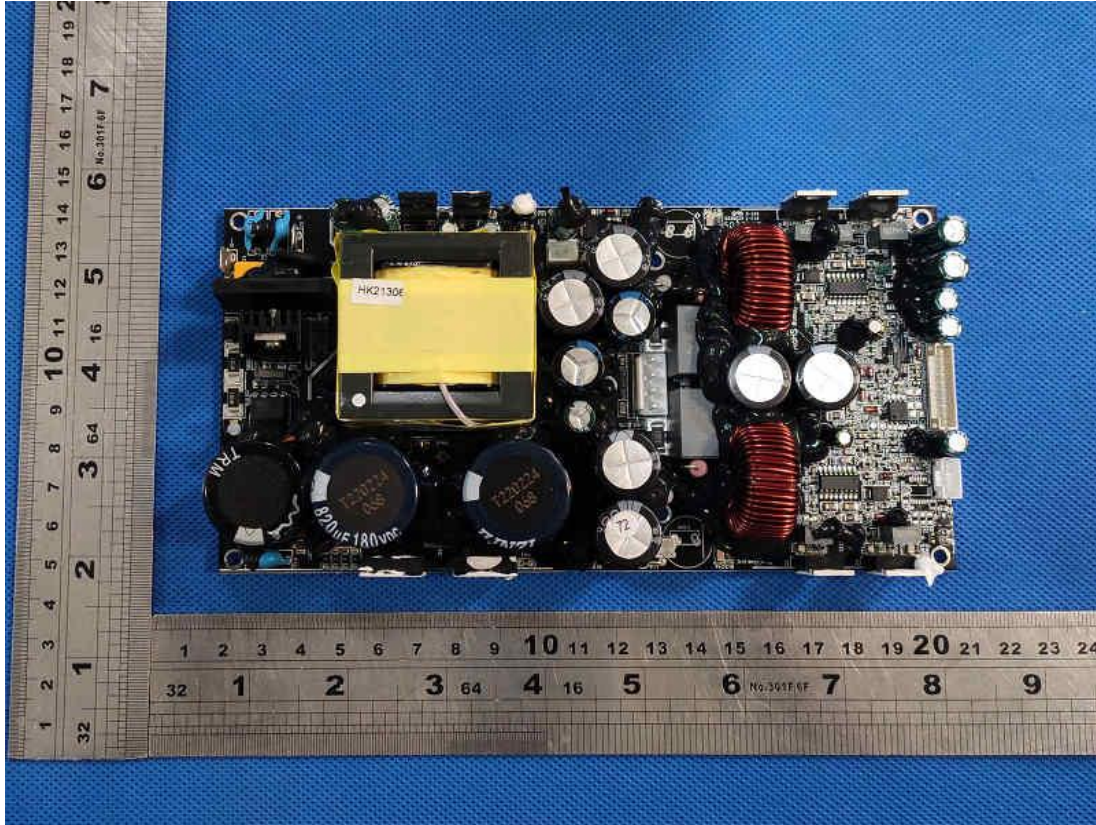




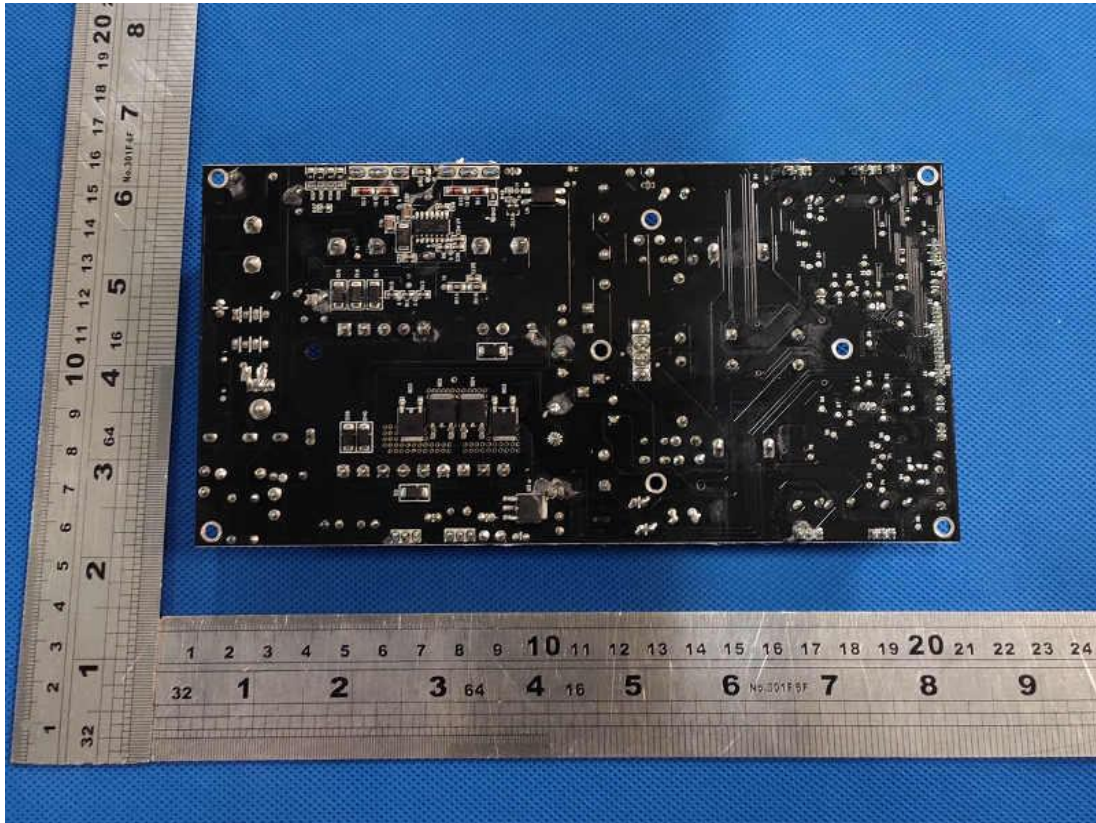
Product: LINE ARRAY SPEAKER SYSTEMS

Type Designation: L-ARRAY 18SA, L-ARRAY 28HA, L-ARRAY 18S, L-ARRAY 28H

Picture 12.



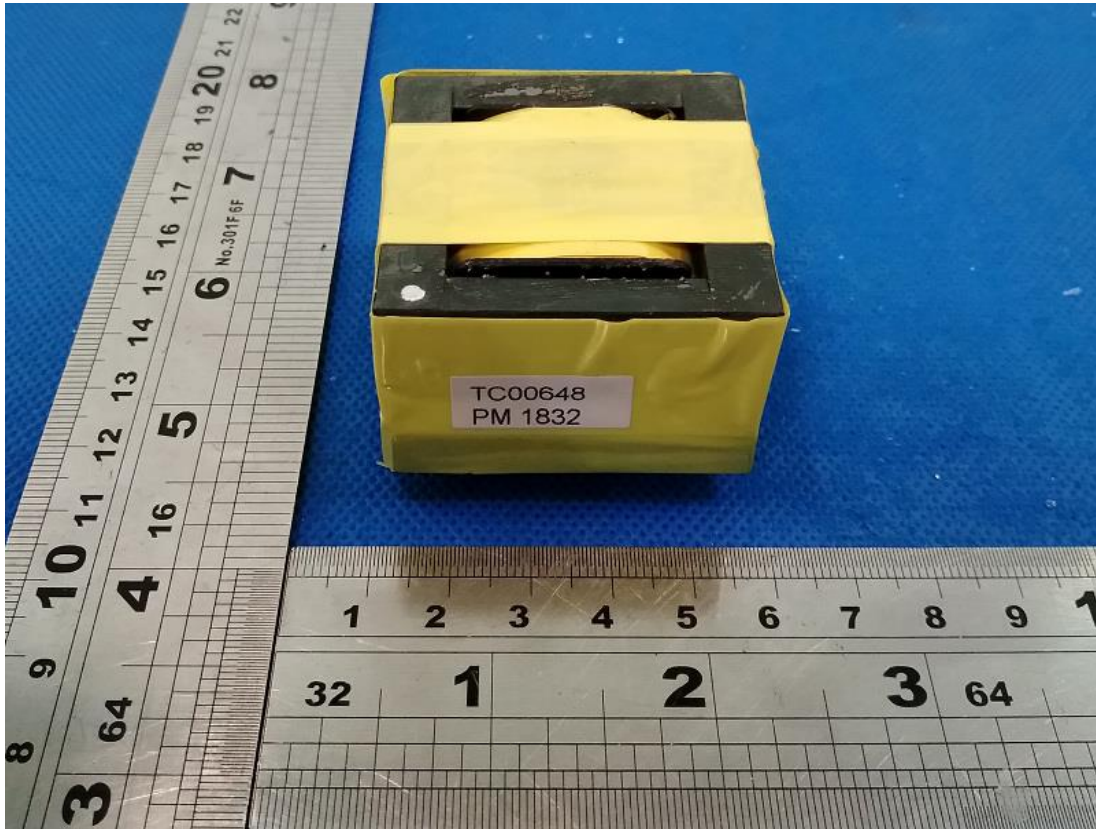
Picture 13.



Product: LINE ARRAY SPEAKER SYSTEMS

Type Designation: L-ARRAY 18SA, L-ARRAY 28HA, L-ARRAY 18S, L-ARRAY 28H

Picture 14.

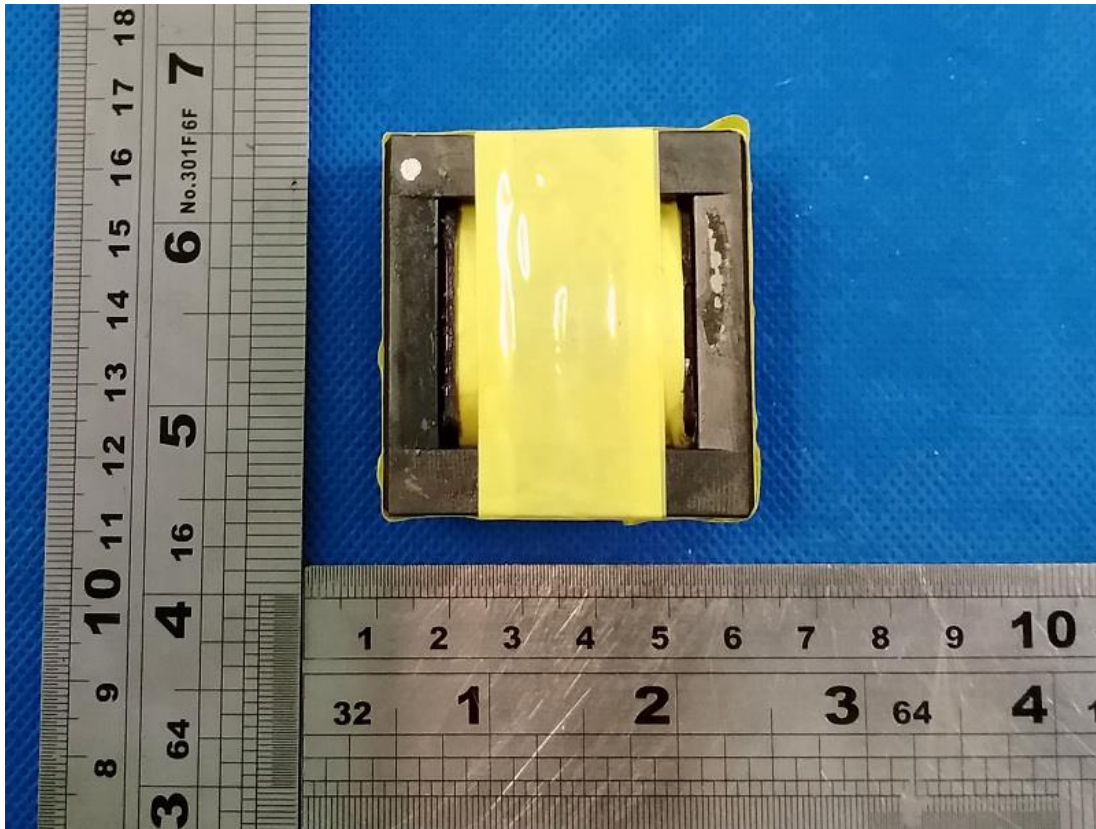


Picture 15.

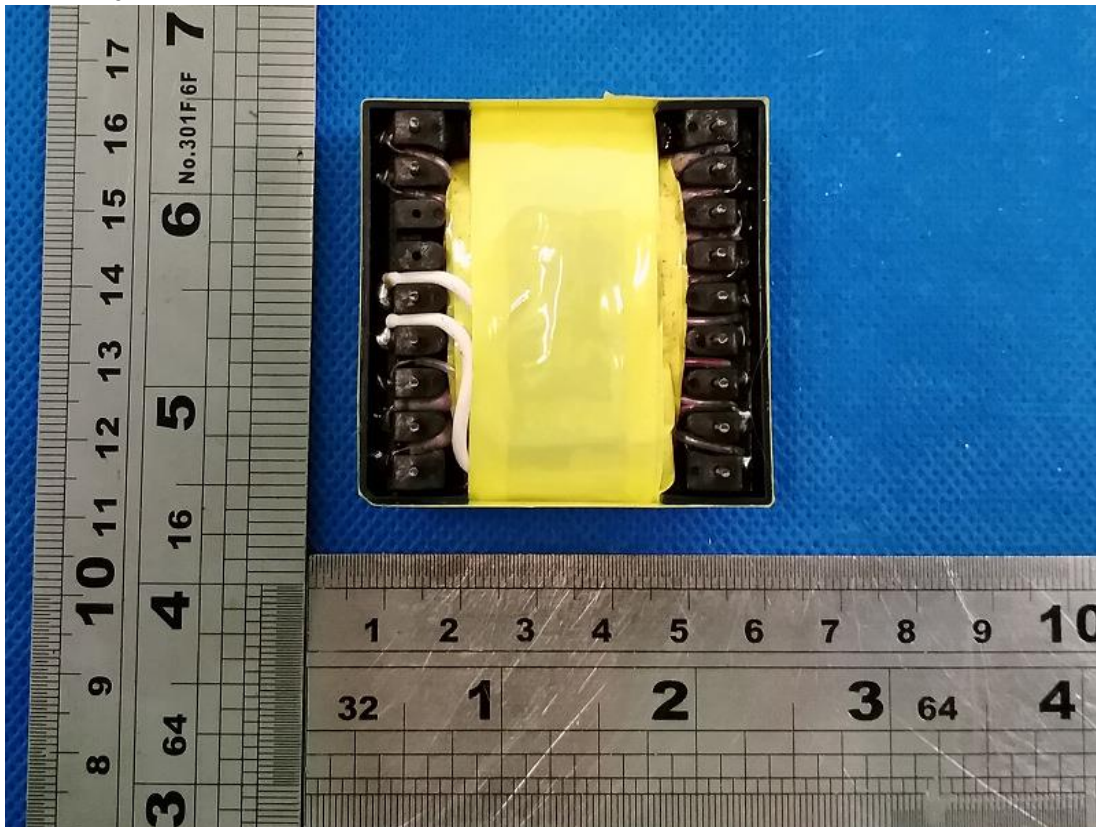


Product: LINE ARRAY SPEAKER SYSTEMS

Type Designation: L-ARRAY 18SA, L-ARRAY 28HA, L-ARRAY 18S, L-ARRAY 28H



Picture 16.

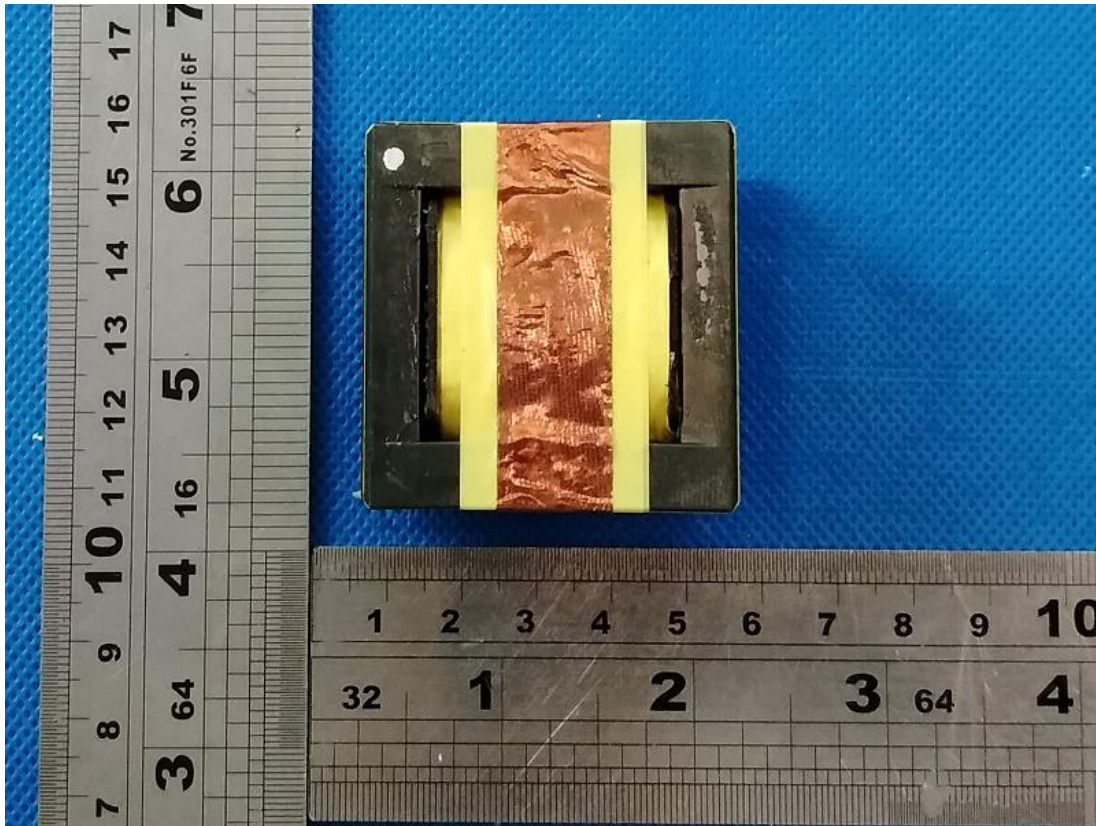


Picture 17.

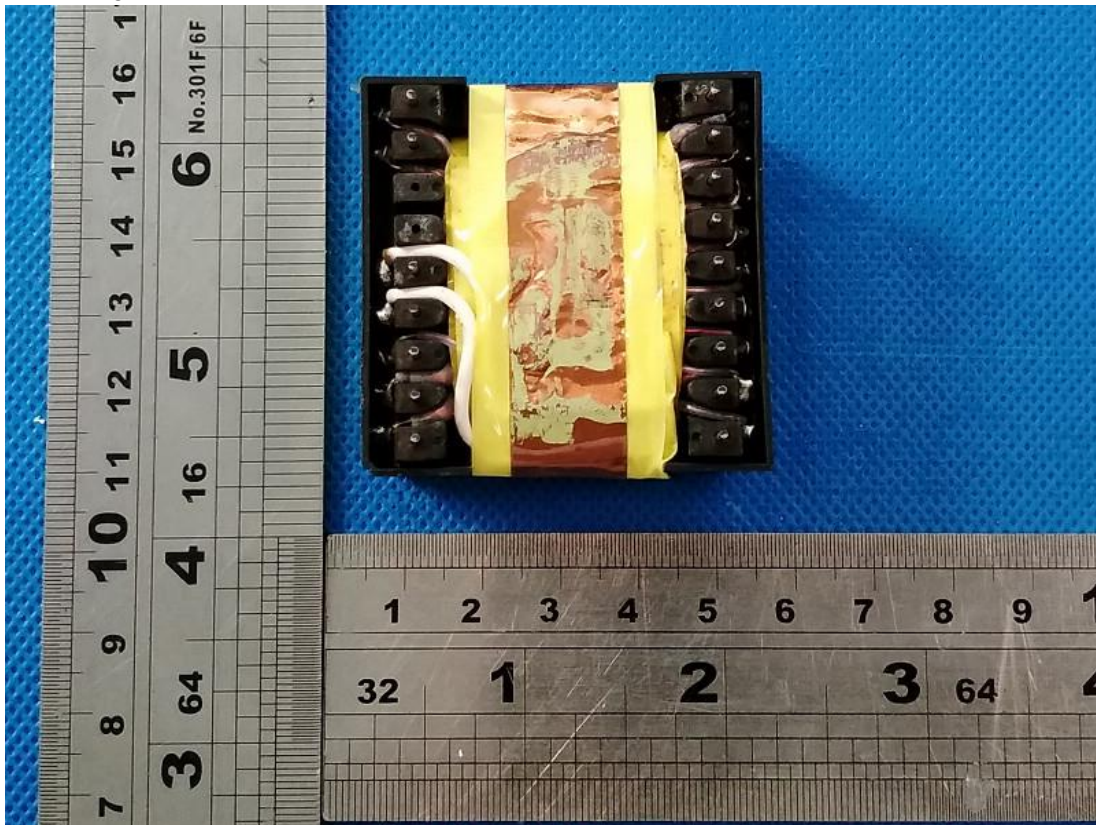


Product: LINE ARRAY SPEAKER SYSTEMS

Type Designation: L-ARRAY 18SA, L-ARRAY 28HA, L-ARRAY 18S, L-ARRAY 28H



Picture 18.

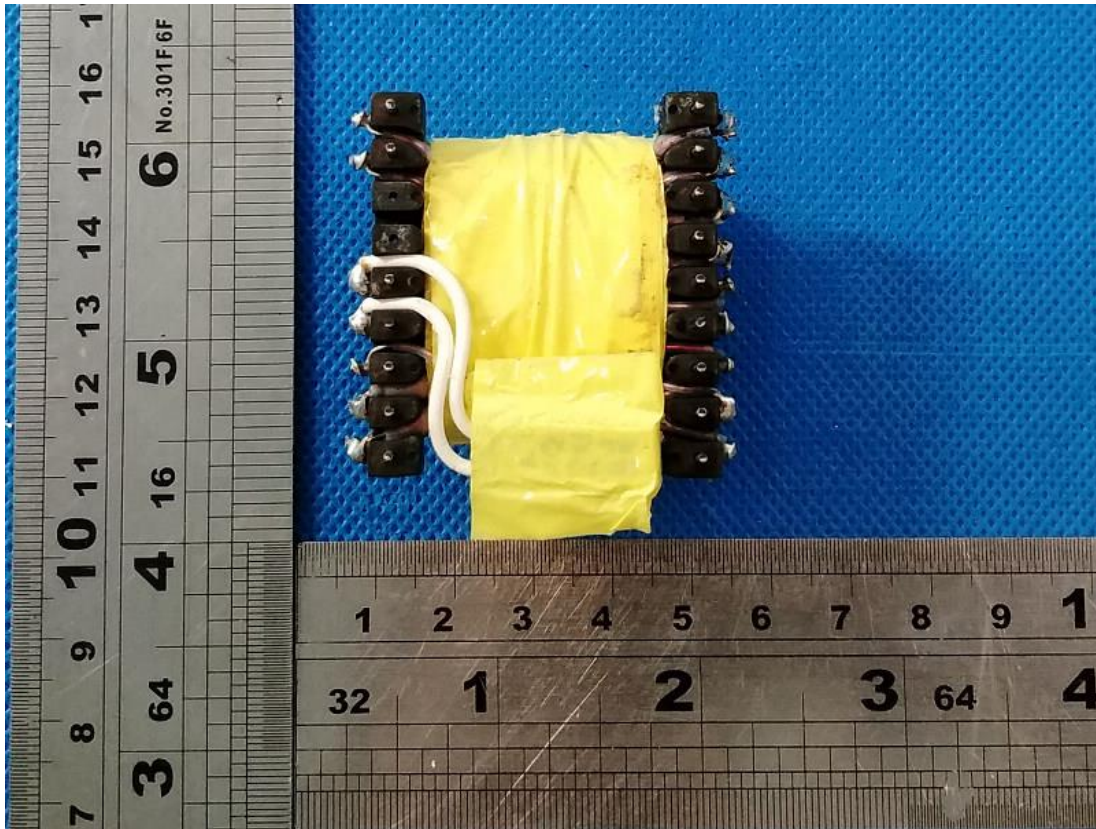


Picture 19.

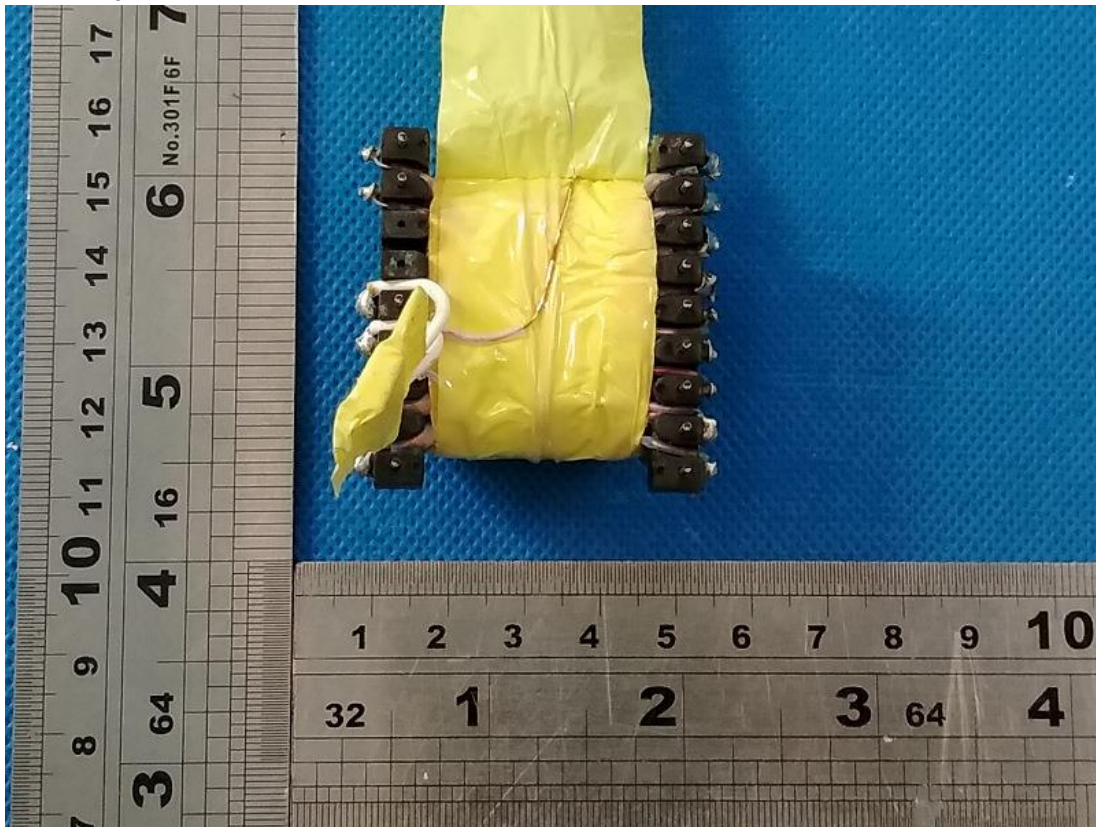


Product: LINE ARRAY SPEAKER SYSTEMS

Type Designation: L-ARRAY 18SA, L-ARRAY 28HA, L-ARRAY 18S, L-ARRAY 28H



Picture 20.

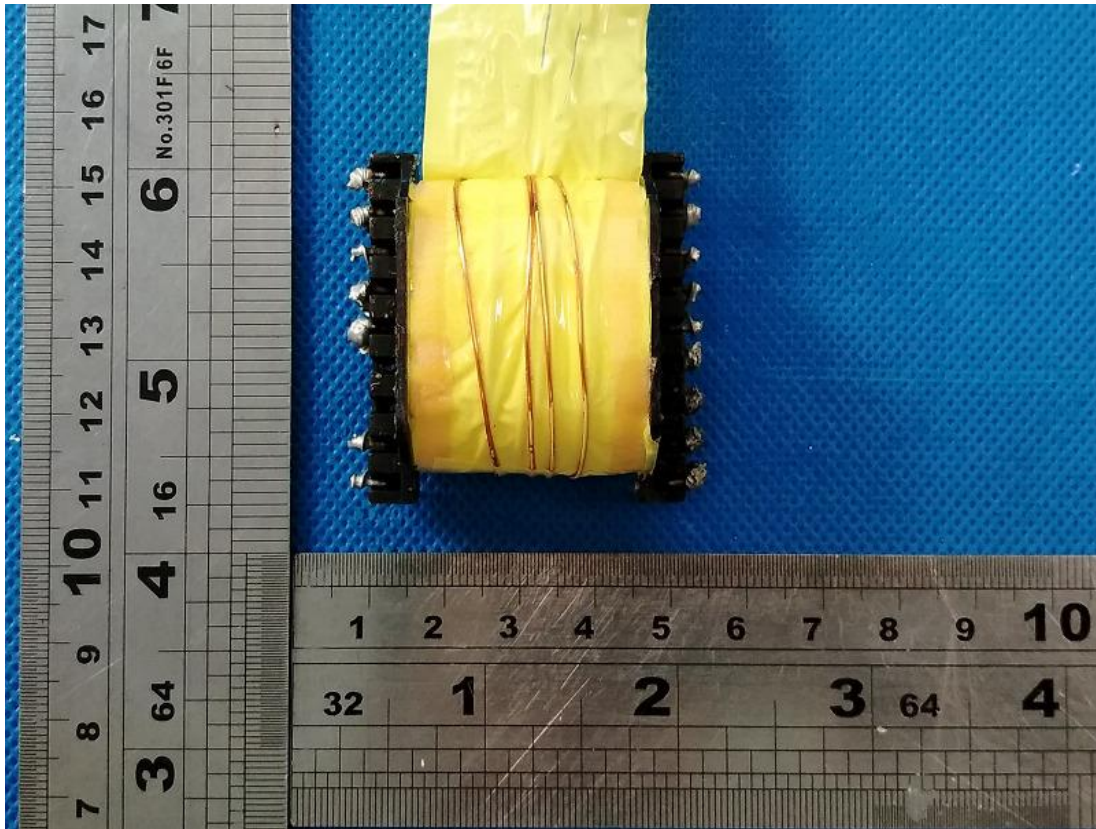


Picture 21.



Product: LINE ARRAY SPEAKER SYSTEMS

Type Designation: L-ARRAY 18SA, L-ARRAY 28HA, L-ARRAY 18S, L-ARRAY 28H



Picture 22.

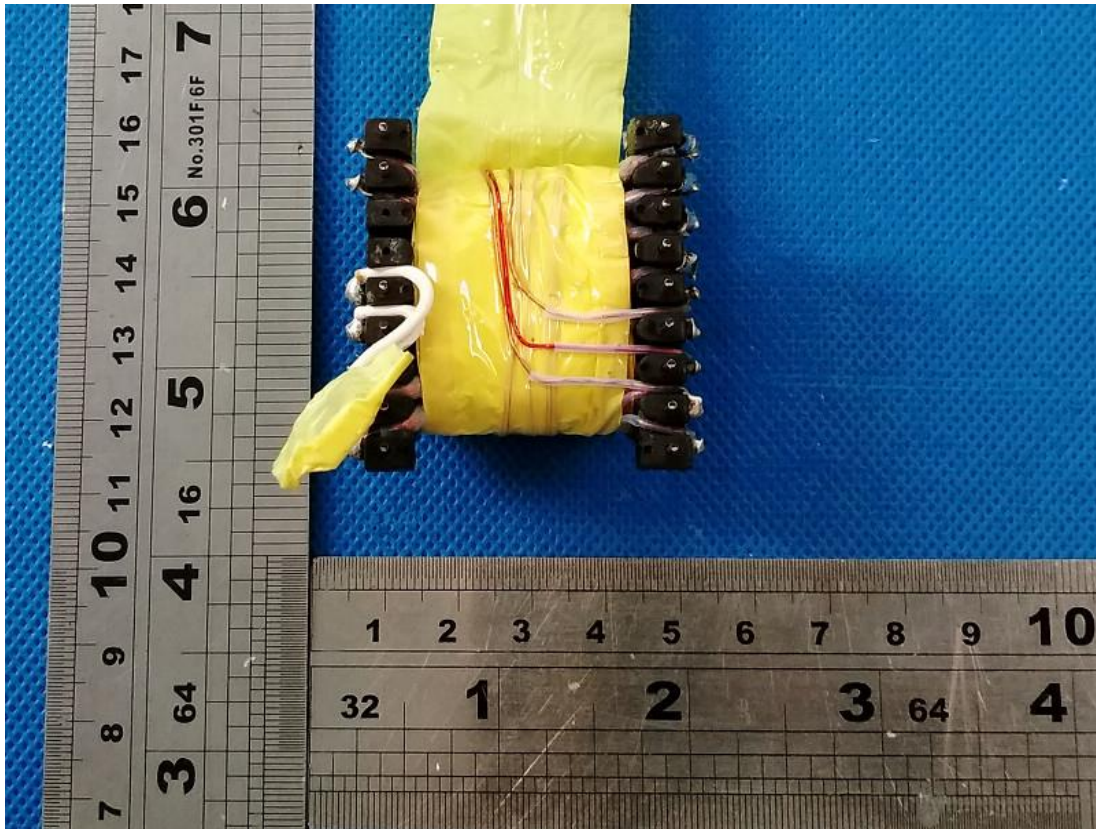


Picture 23.

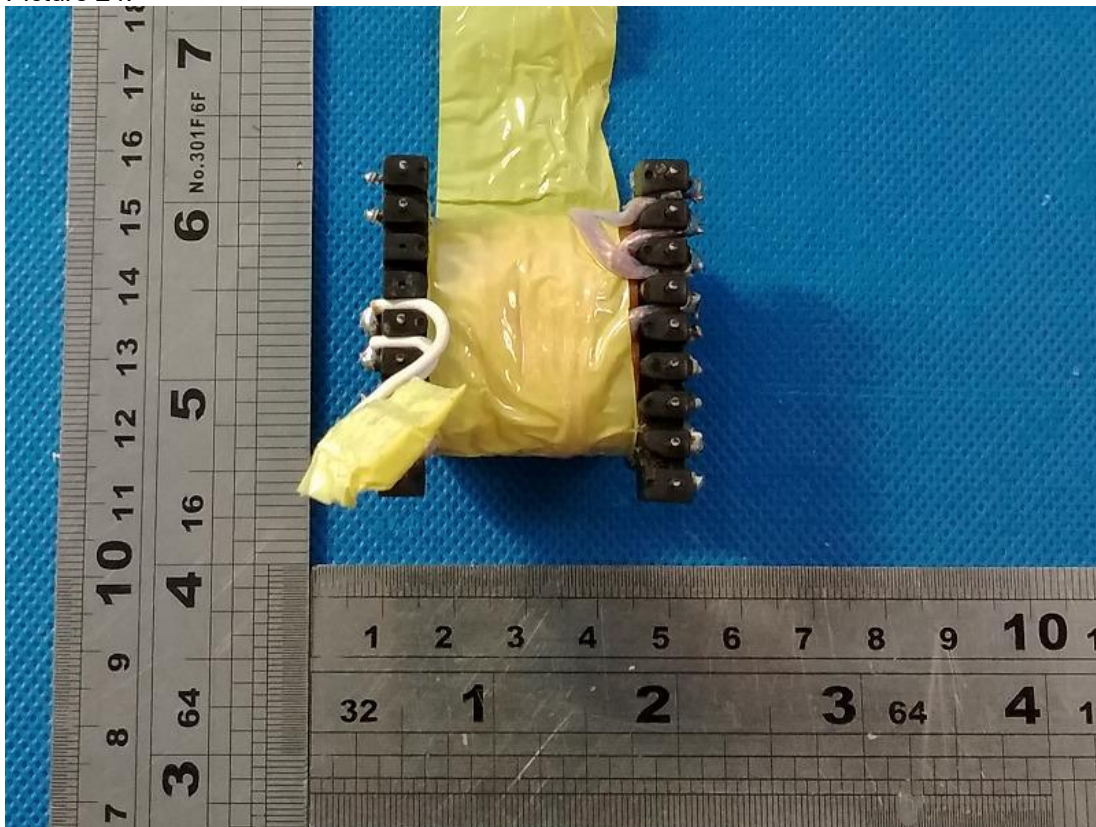


Product: LINE ARRAY SPEAKER SYSTEMS

Type Designation: L-ARRAY 18SA, L-ARRAY 28HA, L-ARRAY 18S, L-ARRAY 28H



Picture 24.

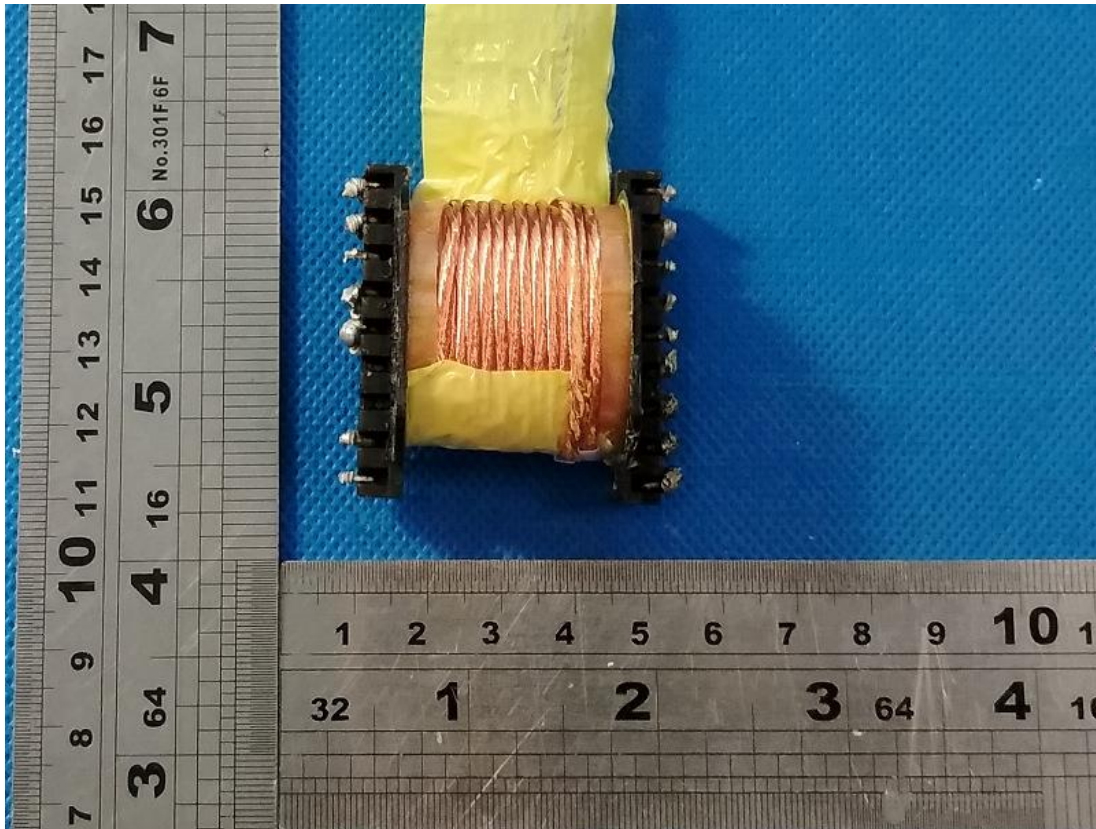


Picture 25.

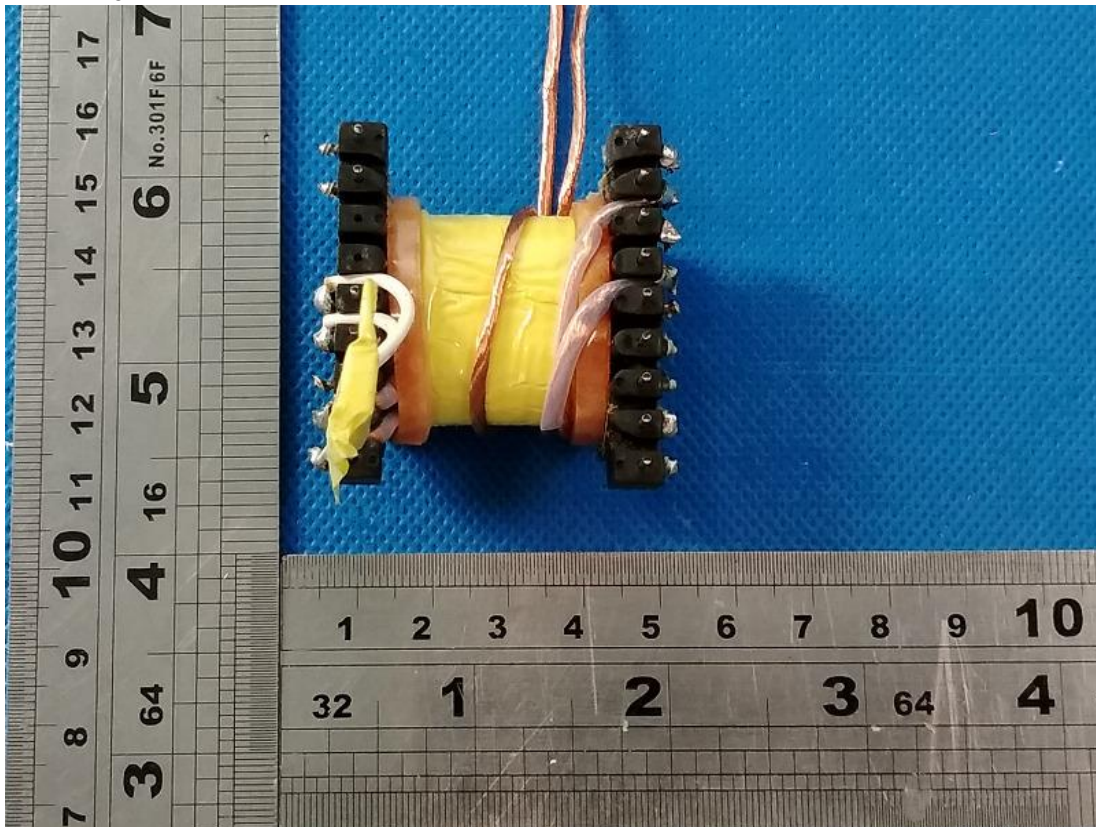


Product: LINE ARRAY SPEAKER SYSTEMS

Type Designation: L-ARRAY 18SA, L-ARRAY 28HA, L-ARRAY 18S, L-ARRAY 28H



Picture 26.

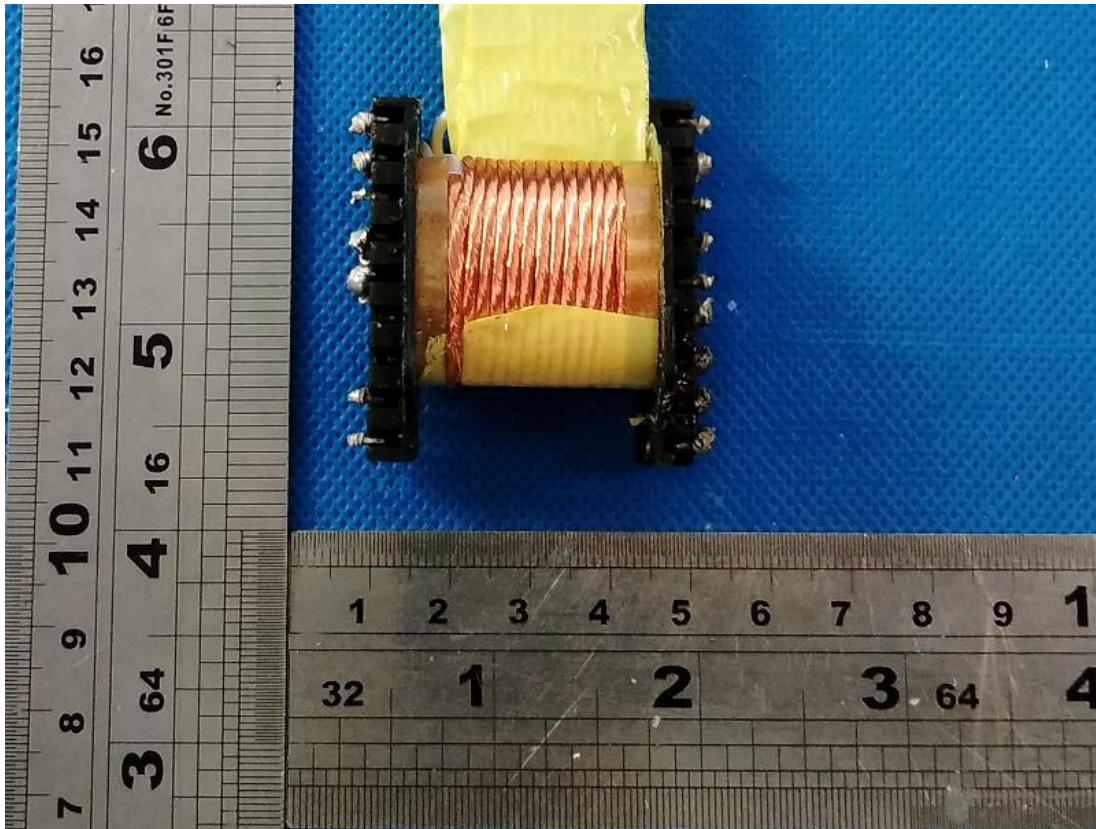


Picture 27.

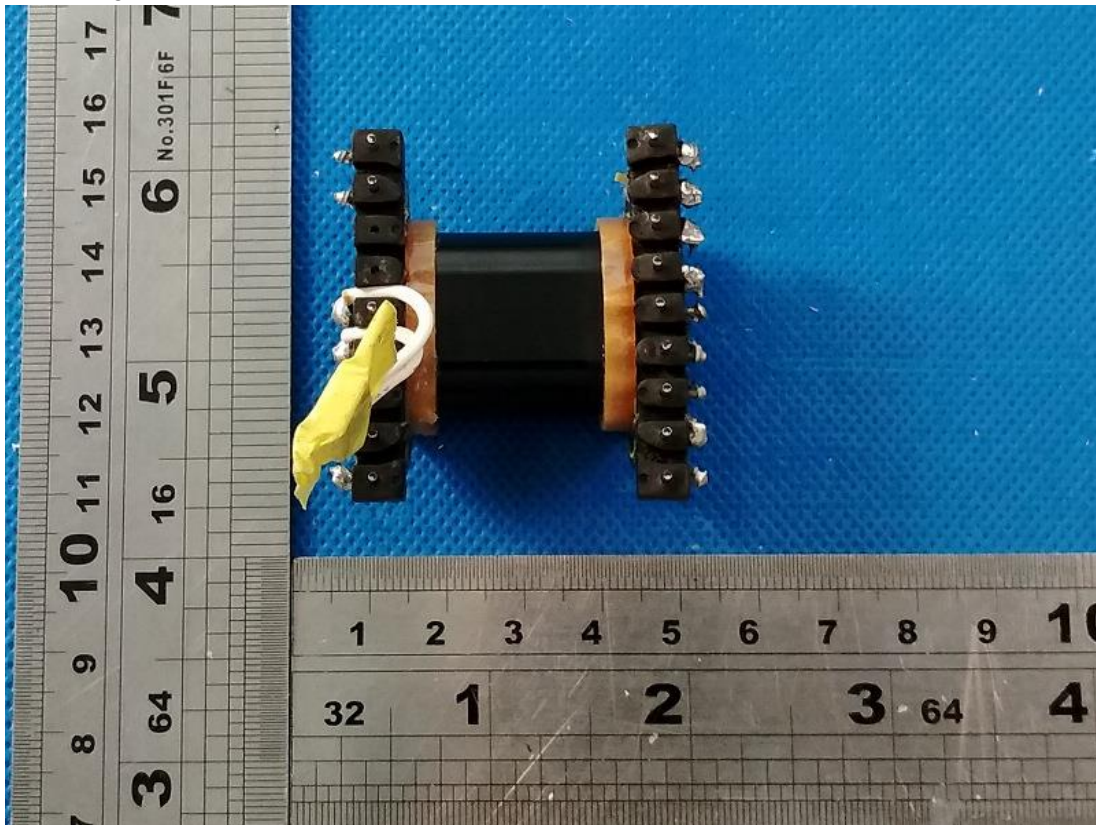


Product: LINE ARRAY SPEAKER SYSTEMS

Type Designation: L-ARRAY 18SA, L-ARRAY 28HA, L-ARRAY 18S, L-ARRAY 28H



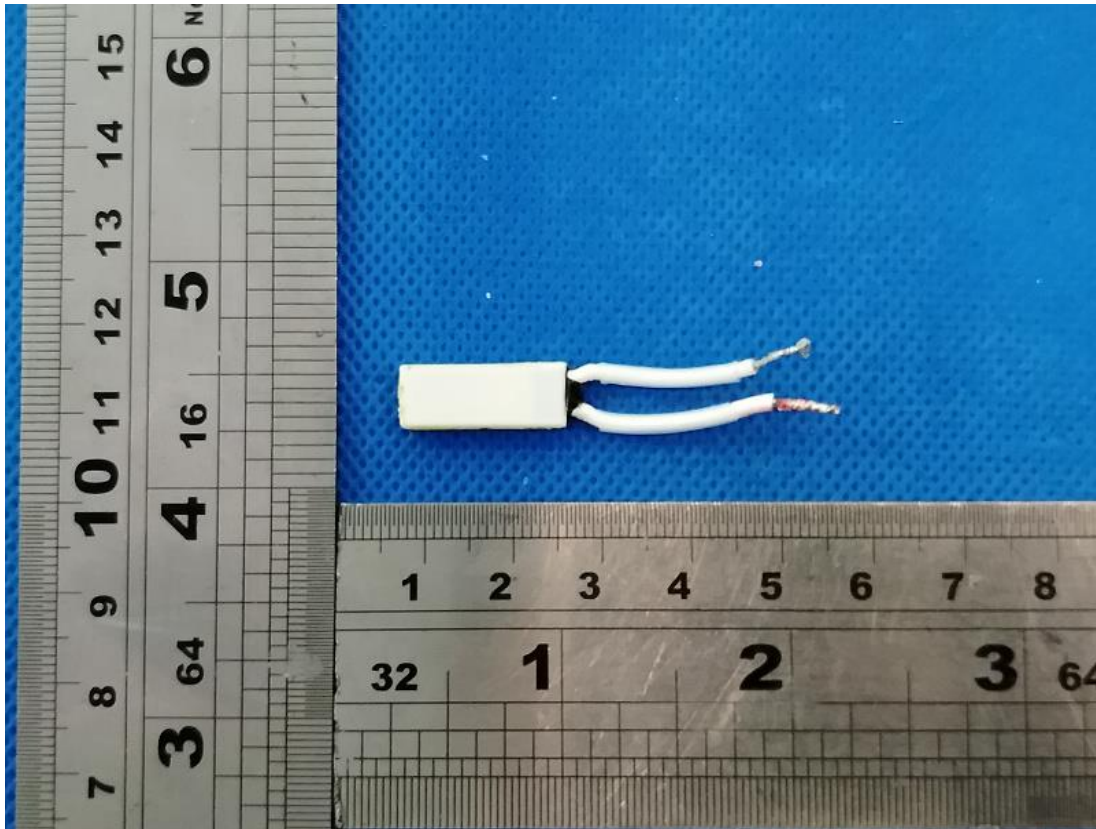
Picture 28.



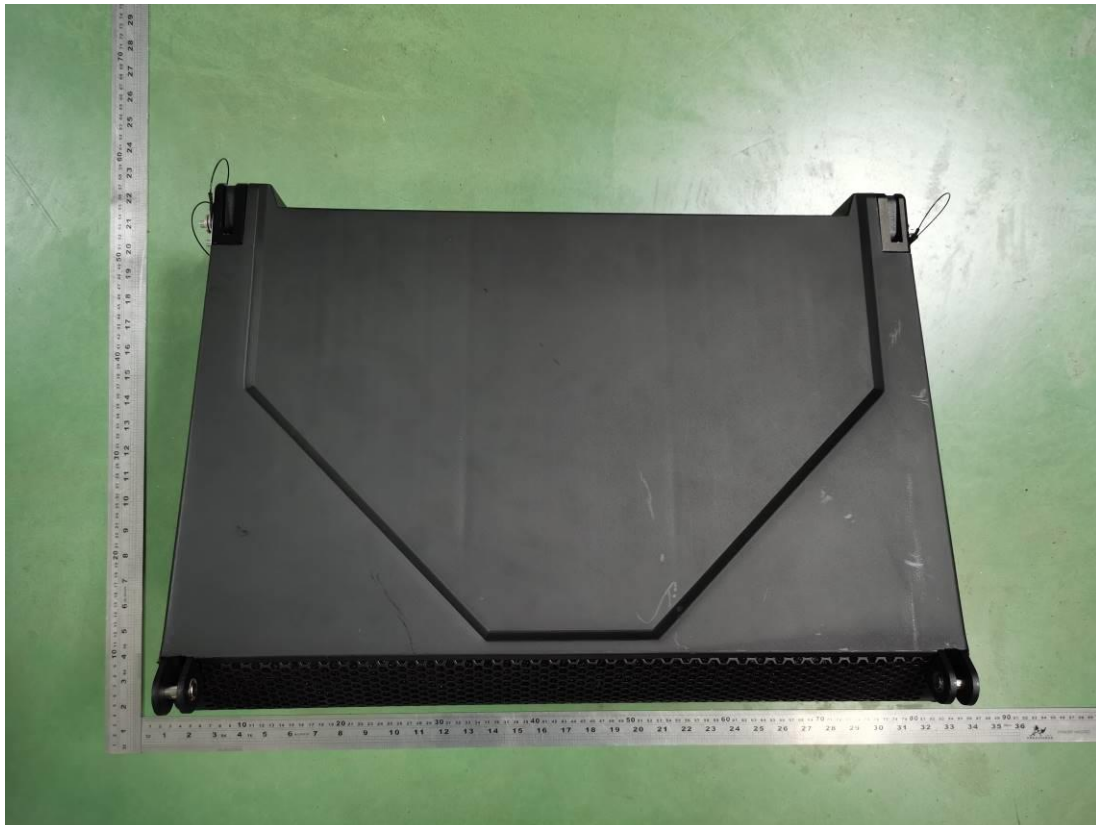
Picture 29.

Product: LINE ARRAY SPEAKER SYSTEMS

Type Designation: L-ARRAY 18SA, L-ARRAY 28HA, L-ARRAY 18S, L-ARRAY 28H



Picture 30.



Picture 31. L-ARRAY 28HA



Product: LINE ARRAY SPEAKER SYSTEMS

Type Designation: L-ARRAY 18SA, L-ARRAY 28HA, L-ARRAY 18S, L-ARRAY 28H



Picture 32.



Picture 33.

Product: LINE ARRAY SPEAKER SYSTEMS

Type Designation: L-ARRAY 18SA, L-ARRAY 28HA, L-ARRAY 18S, L-ARRAY 28H



Picture 34.

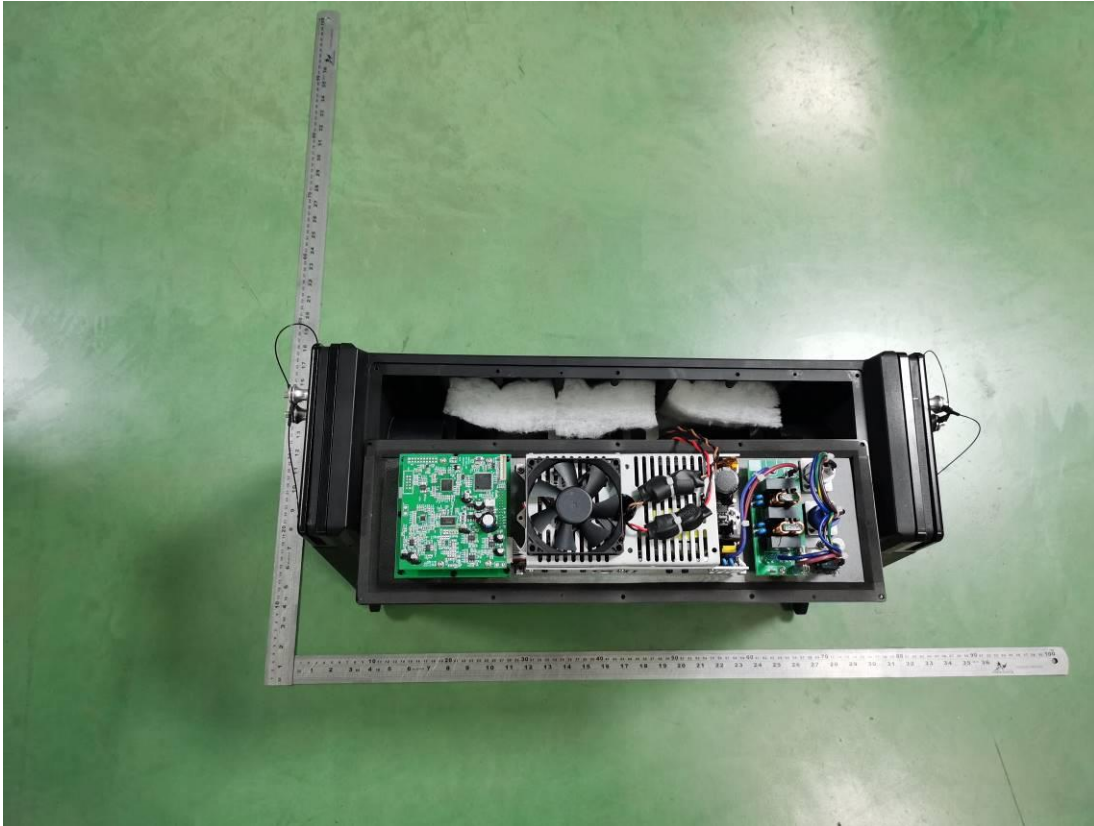


Picture 35.



Product: LINE ARRAY SPEAKER SYSTEMS

Type Designation: L-ARRAY 18SA, L-ARRAY 28HA, L-ARRAY 18S, L-ARRAY 28H



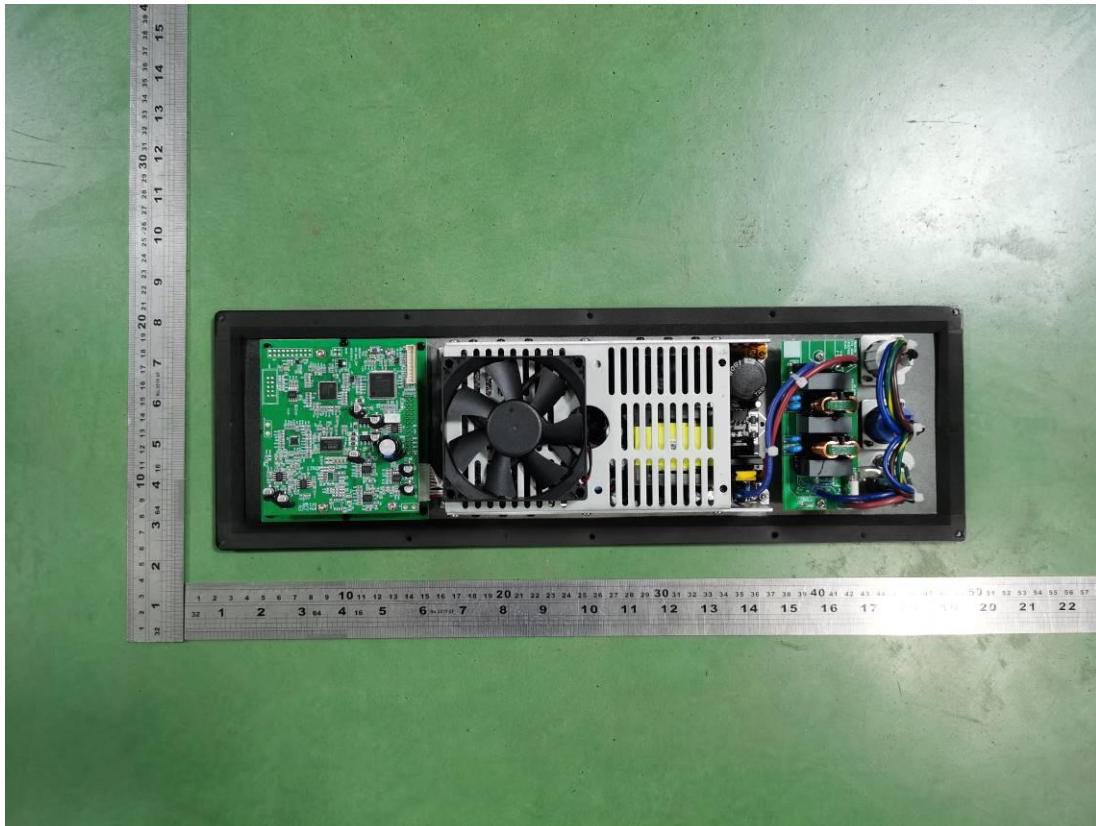
Picture 36.



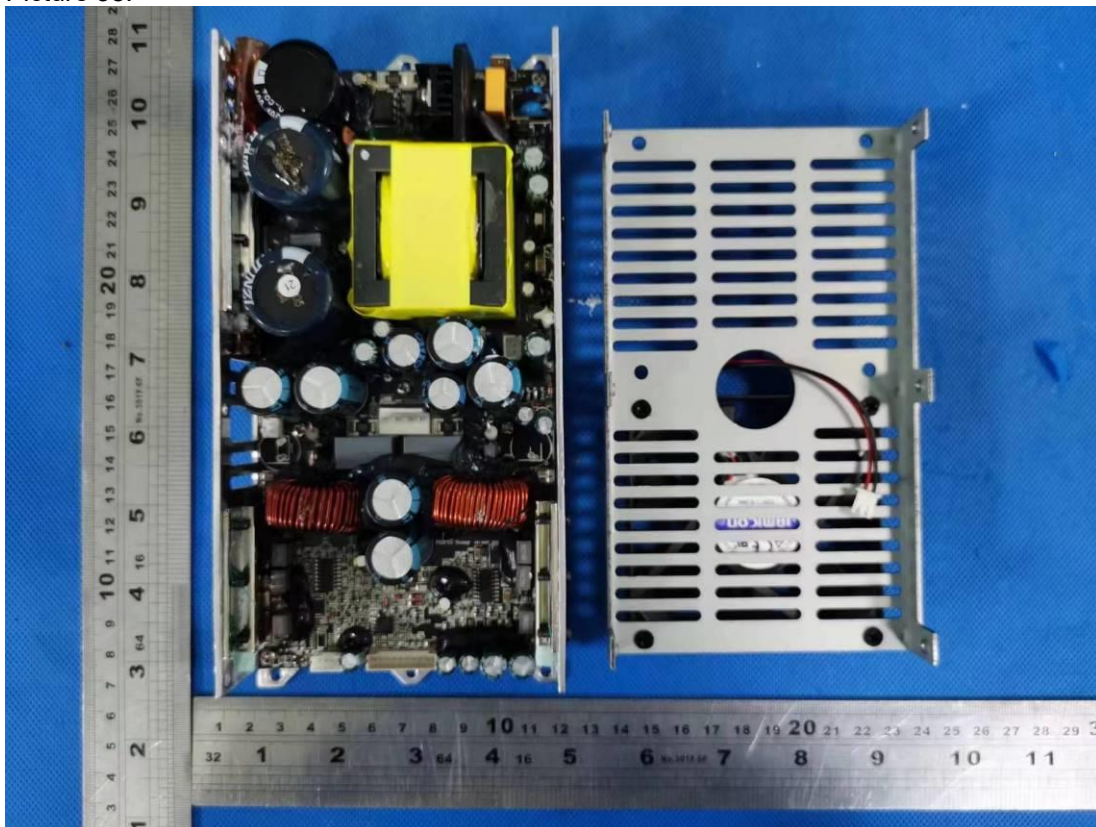
Picture 37.

Product: LINE ARRAY SPEAKER SYSTEMS

Type Designation: L-ARRAY 18SA, L-ARRAY 28HA, L-ARRAY 18S, L-ARRAY 28H



Picture 38.

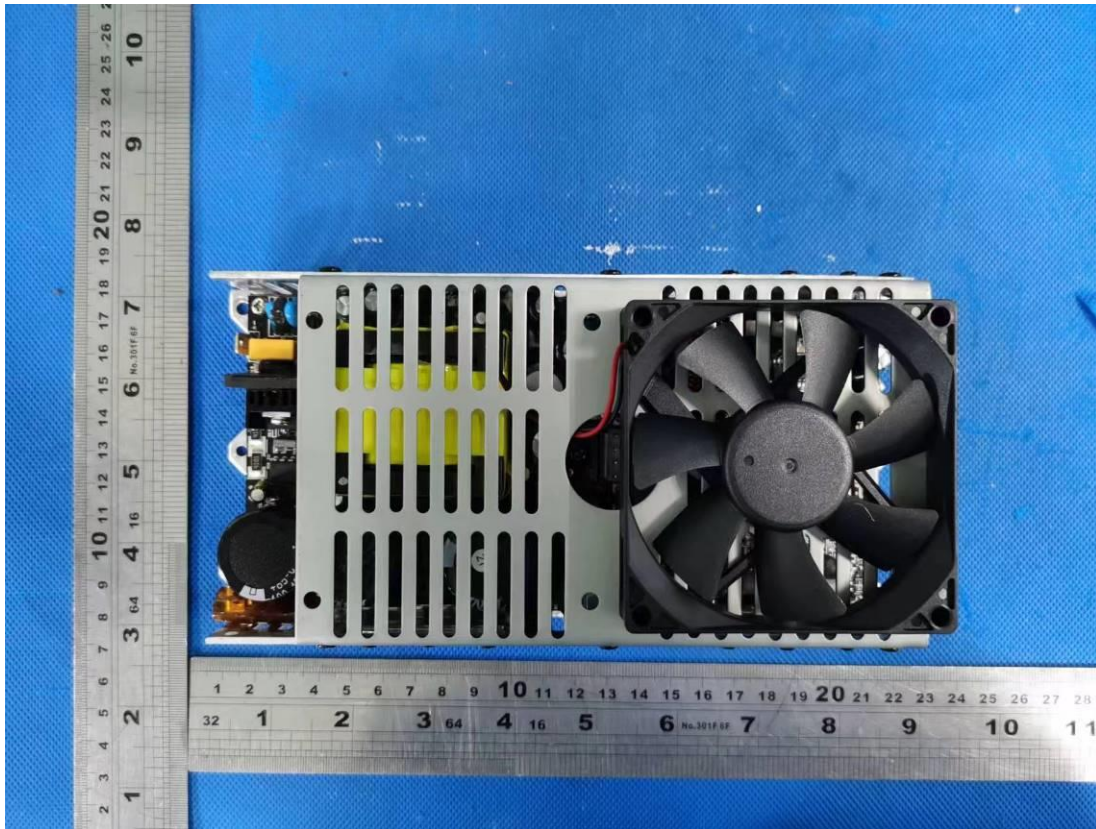


Picture 39.

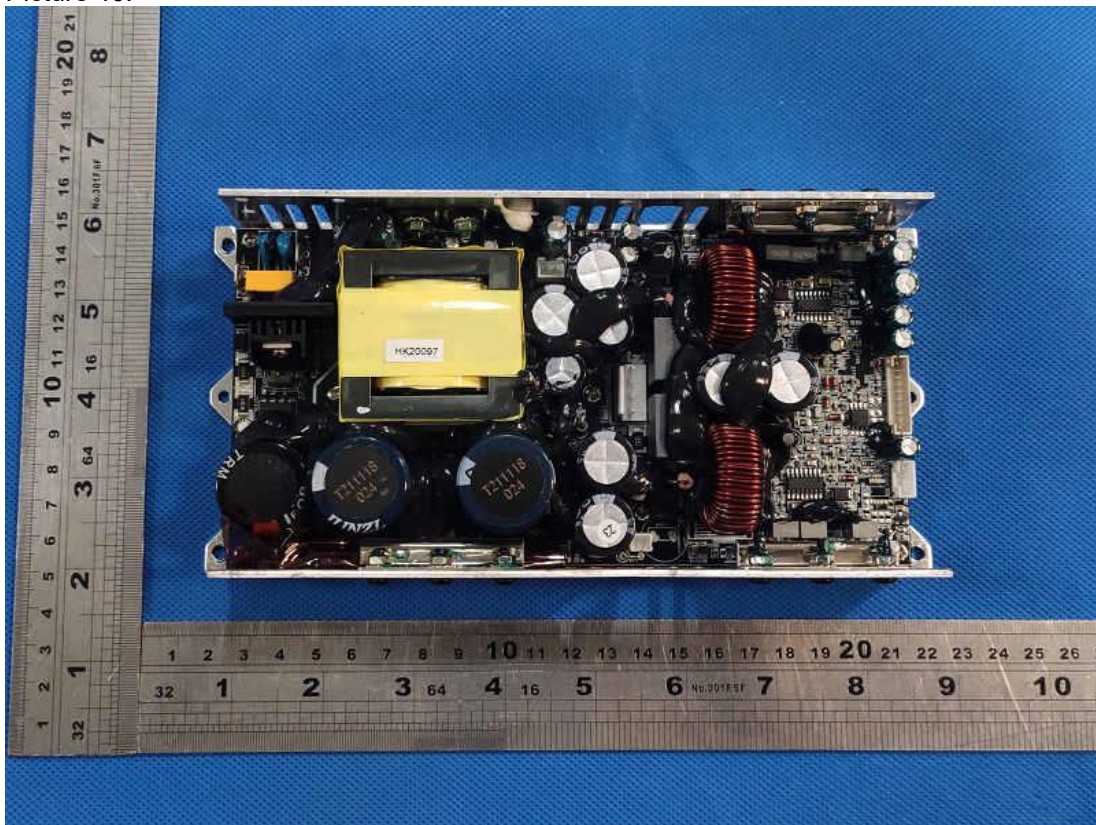


Product: LINE ARRAY SPEAKER SYSTEMS

Type Designation: L-ARRAY 18SA, L-ARRAY 28HA, L-ARRAY 18S, L-ARRAY 28H



Picture 40.

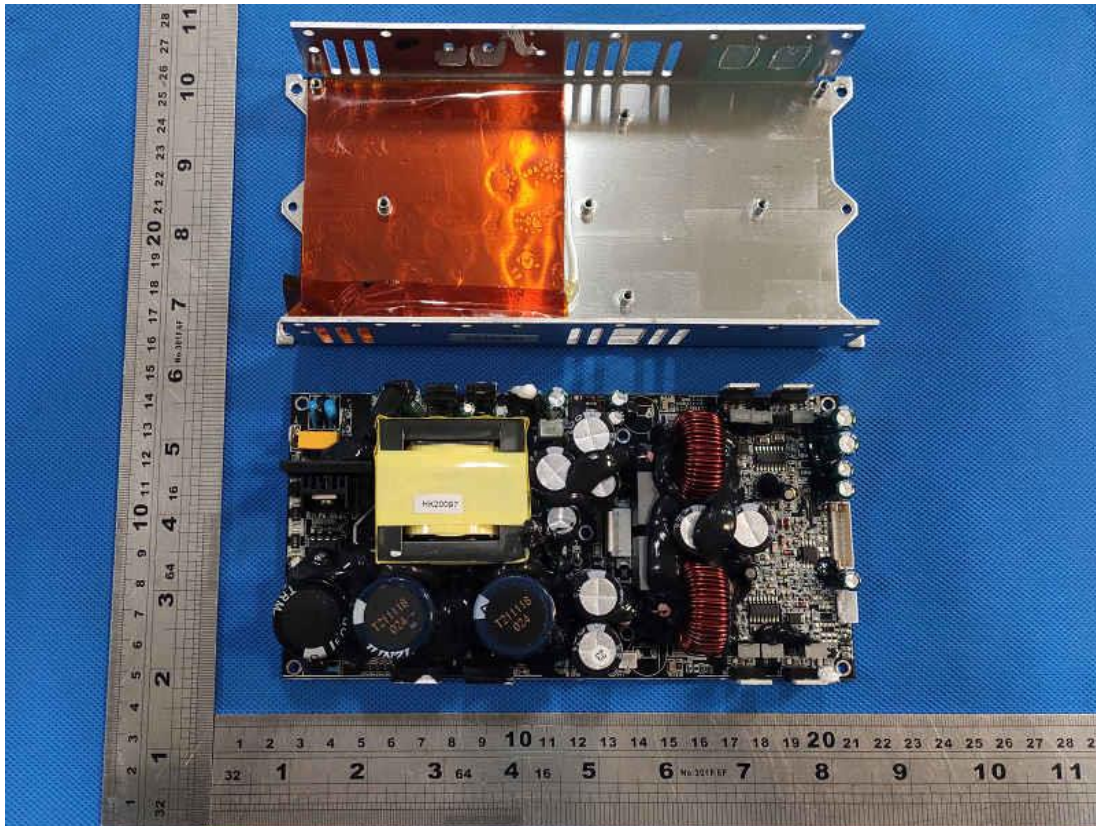


Picture 41.

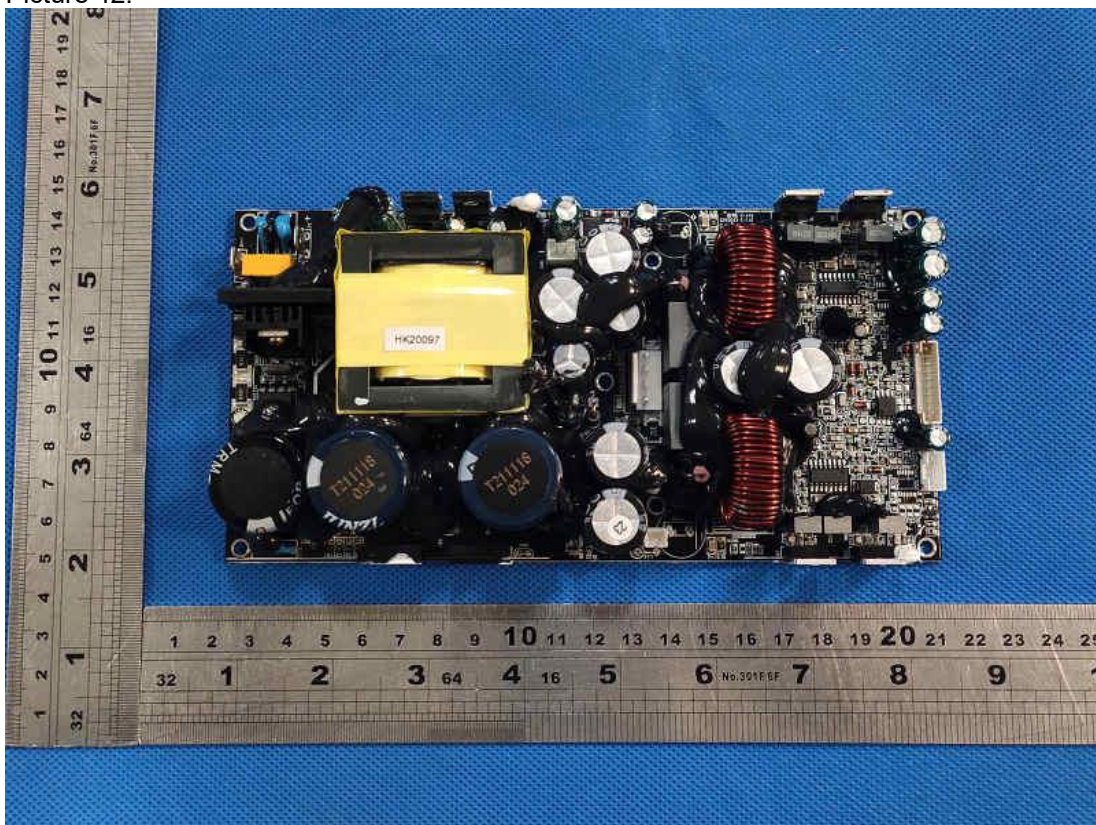


Product: LINE ARRAY SPEAKER SYSTEMS

Type Designation: L-ARRAY 18SA, L-ARRAY 28HA, L-ARRAY 18S, L-ARRAY 28H



Picture 42.

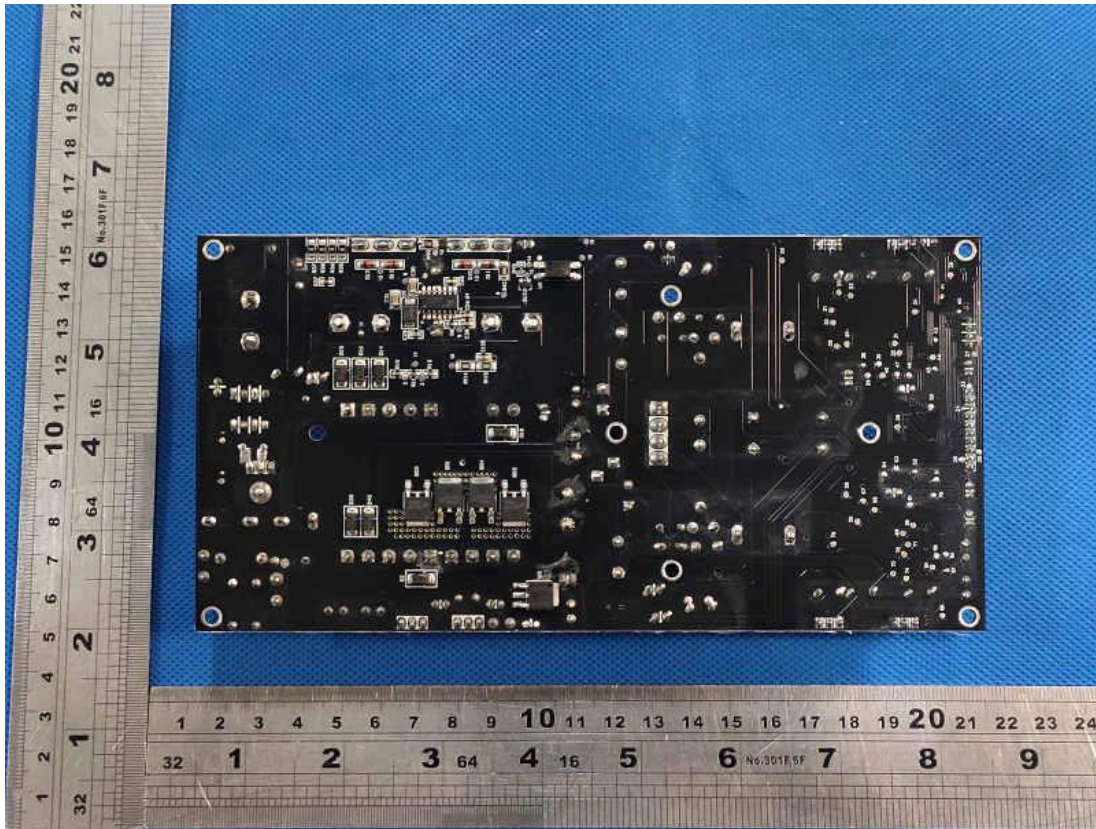


Picture 43.



Product: LINE ARRAY SPEAKER SYSTEMS

Type Designation: L-ARRAY 18SA, L-ARRAY 28HA, L-ARRAY 18S, L-ARRAY 28H



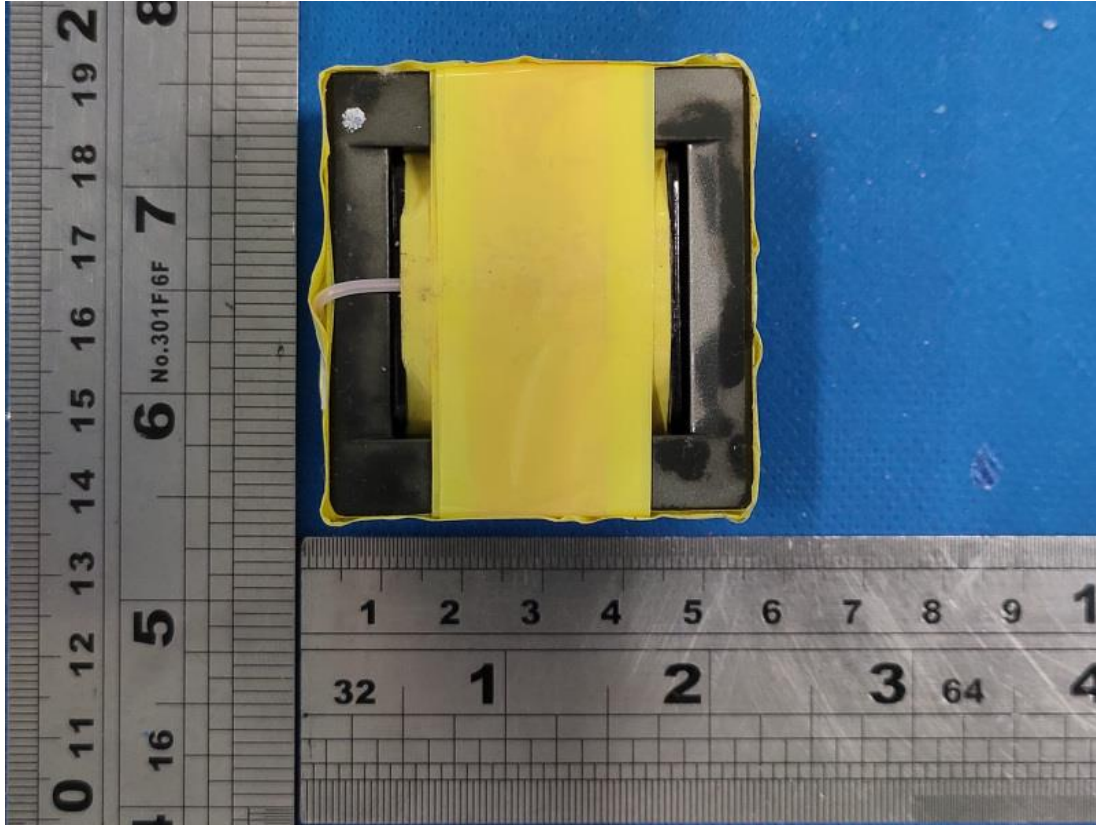
Picture 44.



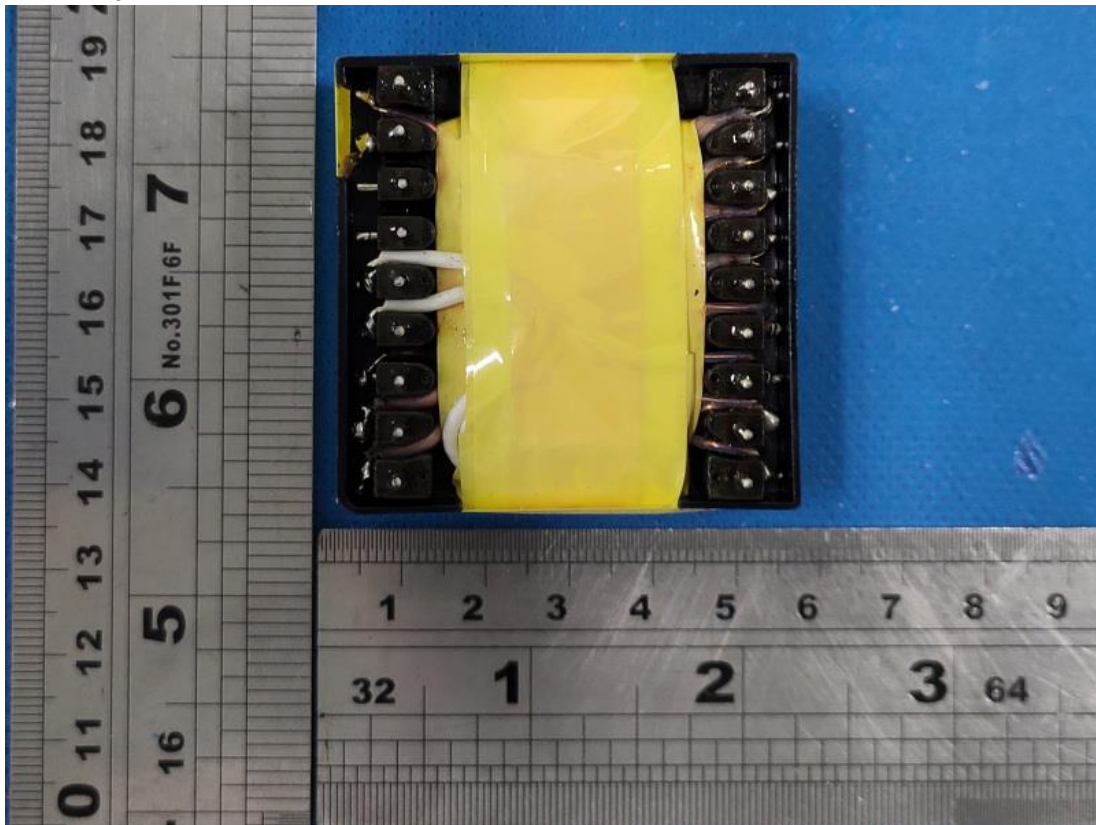
Product: LINE ARRAY SPEAKER SYSTEMS

Type Designation: L-ARRAY 18SA, L-ARRAY 28HA, L-ARRAY 18S, L-ARRAY 28H

Picture 45.



Picture 46.

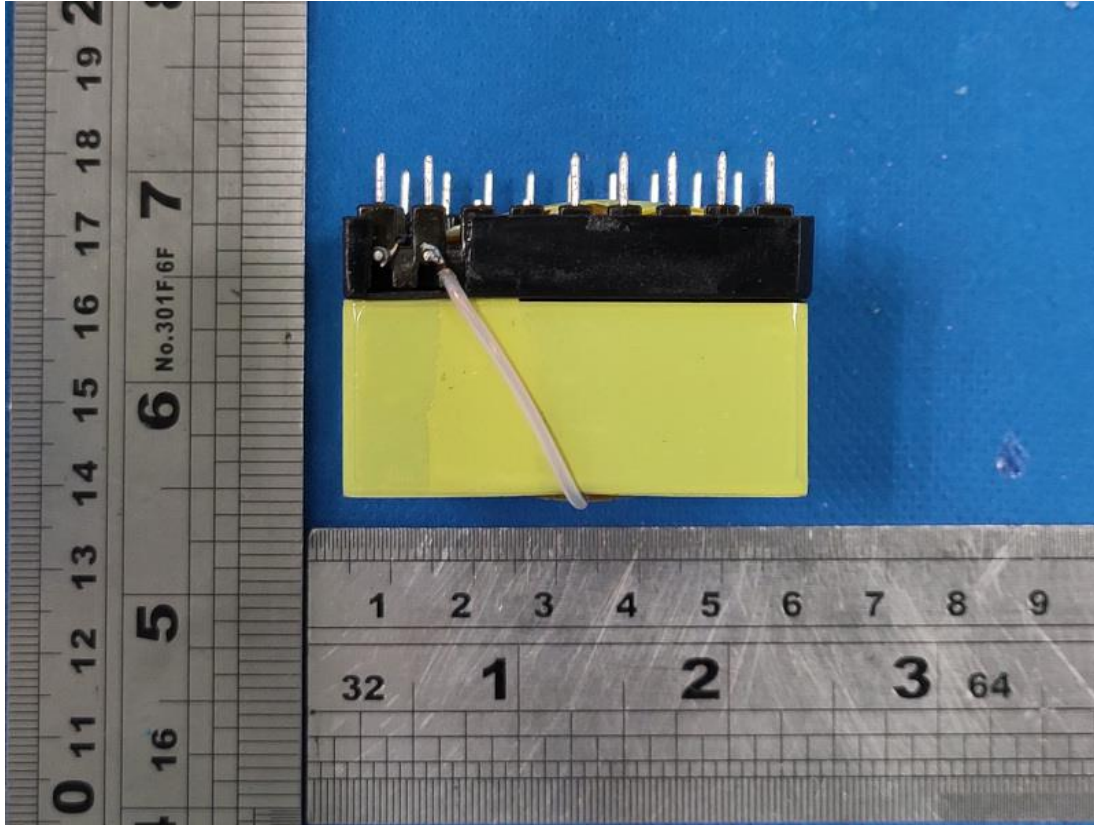




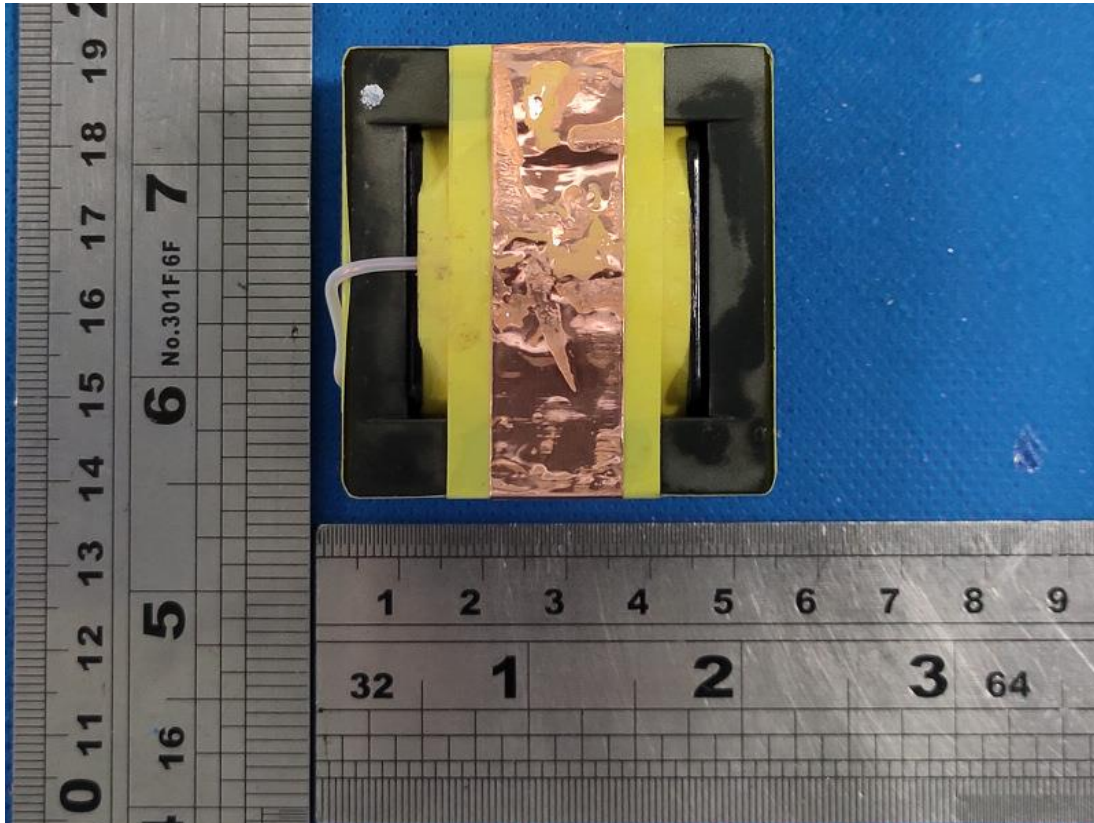
Product: LINE ARRAY SPEAKER SYSTEMS

Type Designation: L-ARRAY 18SA, L-ARRAY 28HA, L-ARRAY 18S, L-ARRAY 28H

Picture 47.



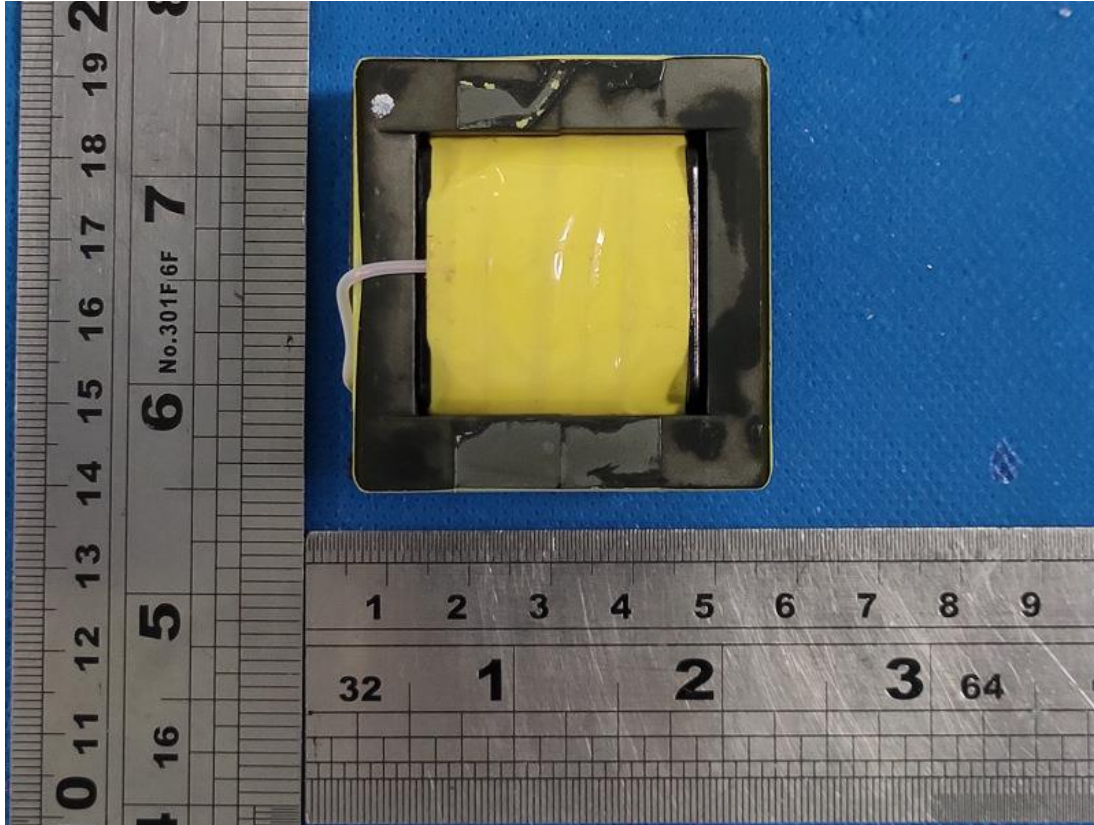
Picture 48.



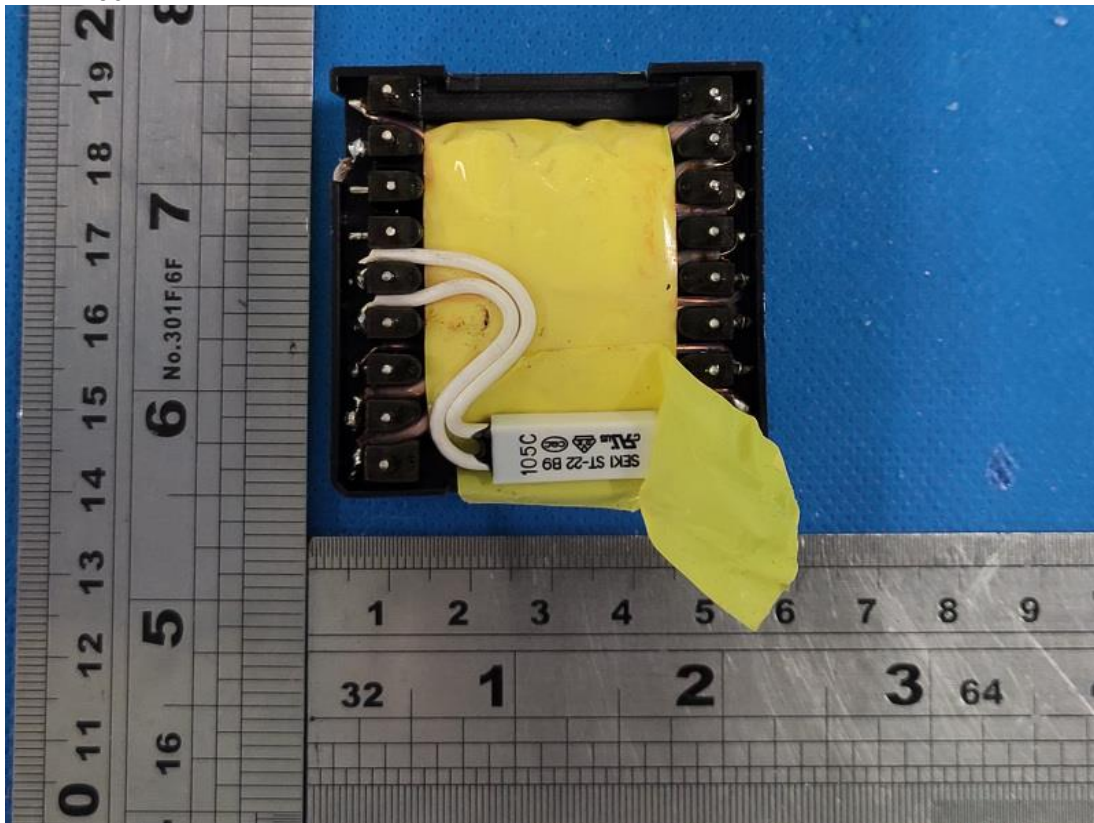
Product: LINE ARRAY SPEAKER SYSTEMS

Type Designation: L-ARRAY 18SA, L-ARRAY 28HA, L-ARRAY 18S, L-ARRAY 28H

Picture 49.



Picture 50.

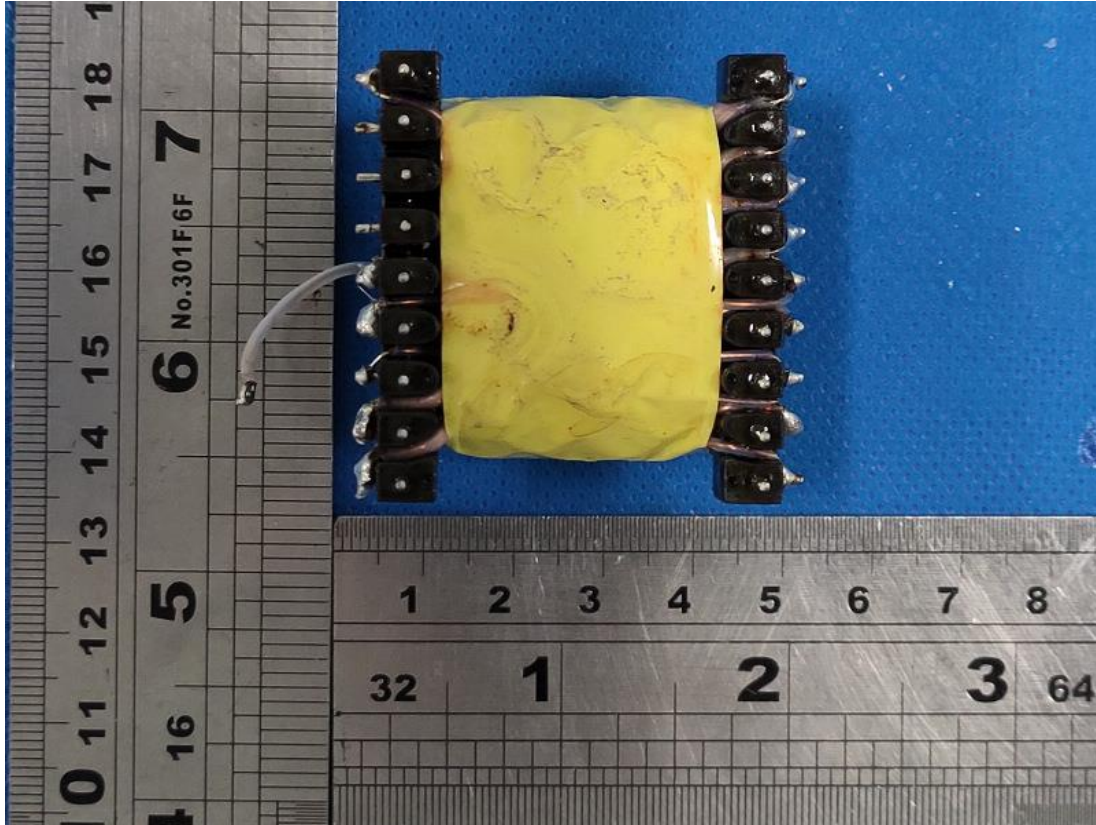




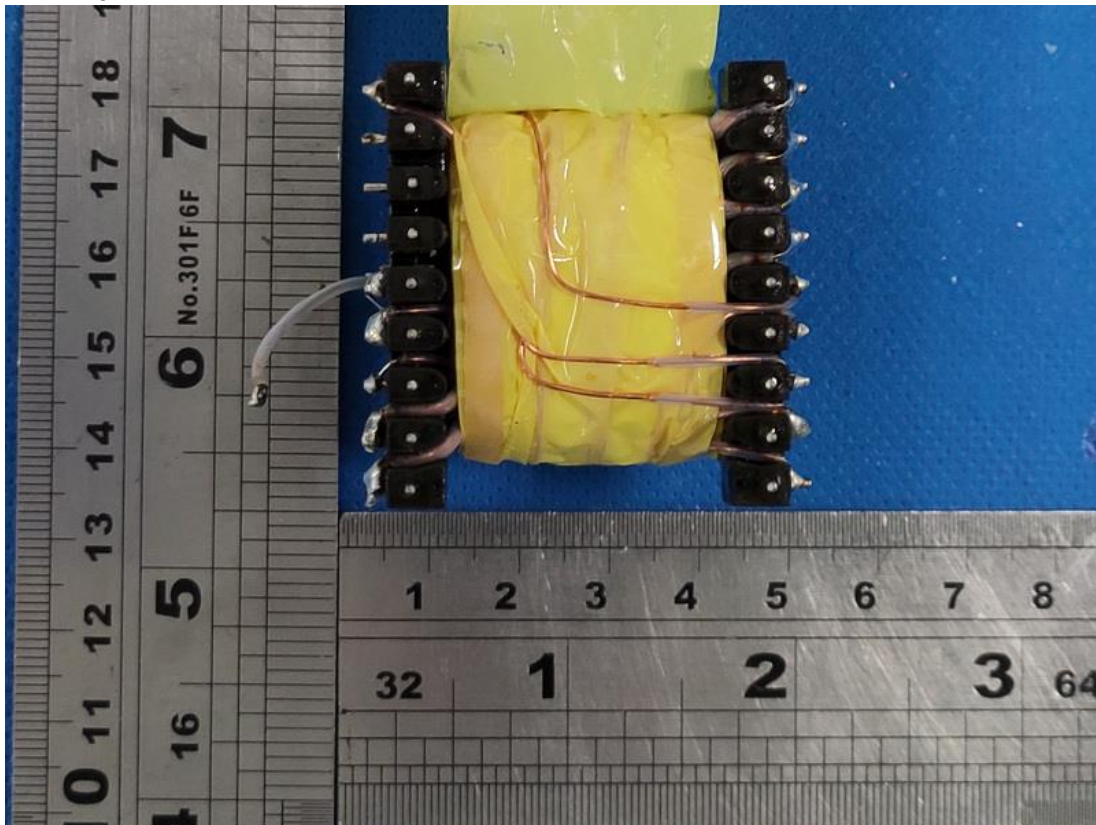
Product: LINE ARRAY SPEAKER SYSTEMS

Type Designation: L-ARRAY 18SA, L-ARRAY 28HA, L-ARRAY 18S, L-ARRAY 28H

Picture 51.



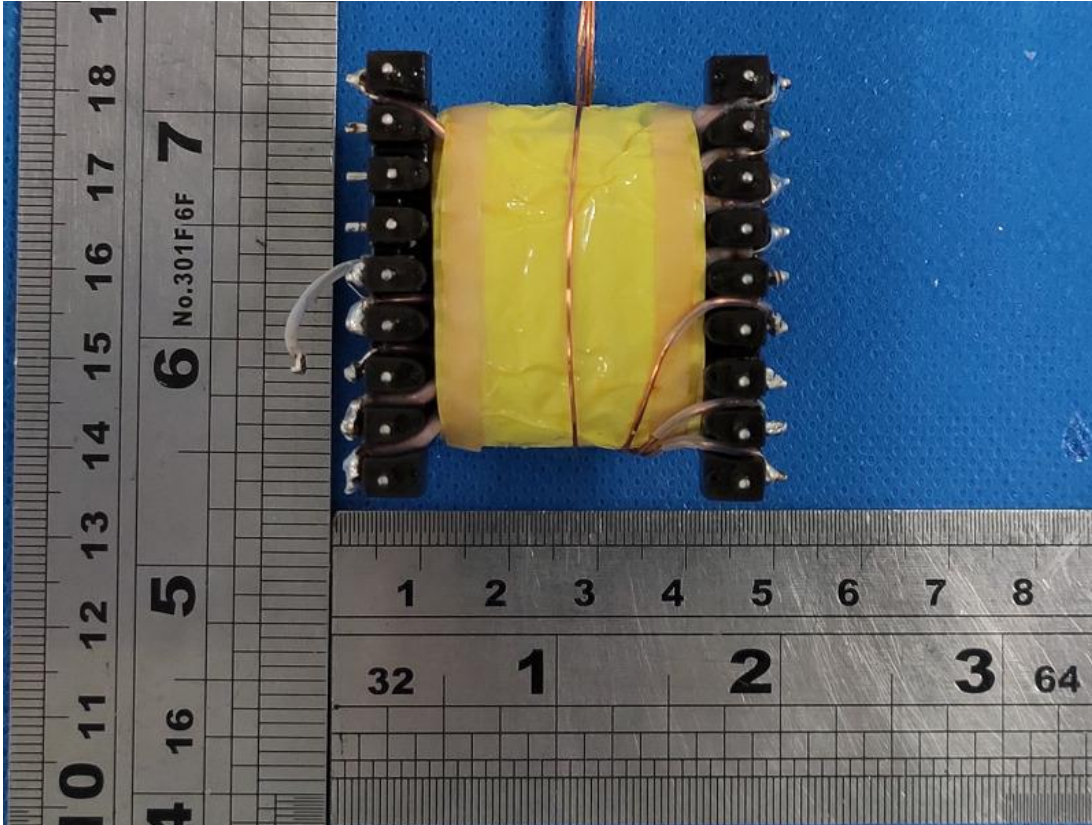
Picture 52.



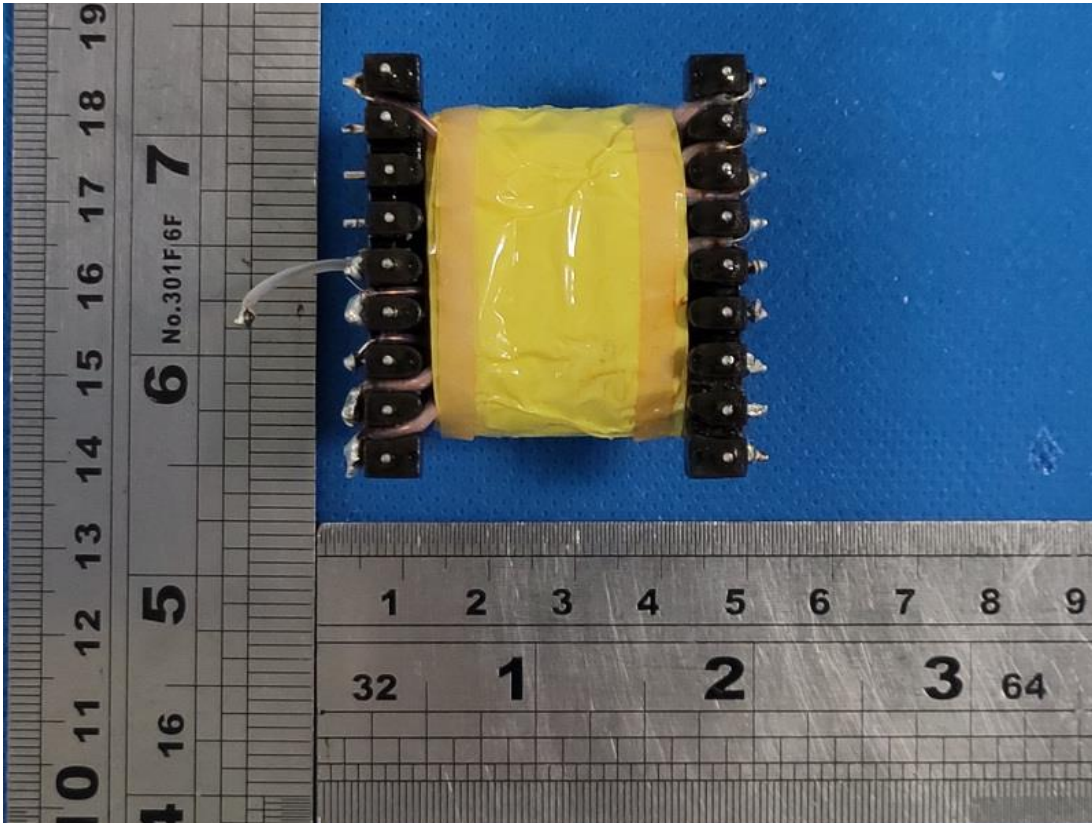
Product: LINE ARRAY SPEAKER SYSTEMS

Type Designation: L-ARRAY 18SA, L-ARRAY 28HA, L-ARRAY 18S, L-ARRAY 28H

Picture 53.



Picture 54.

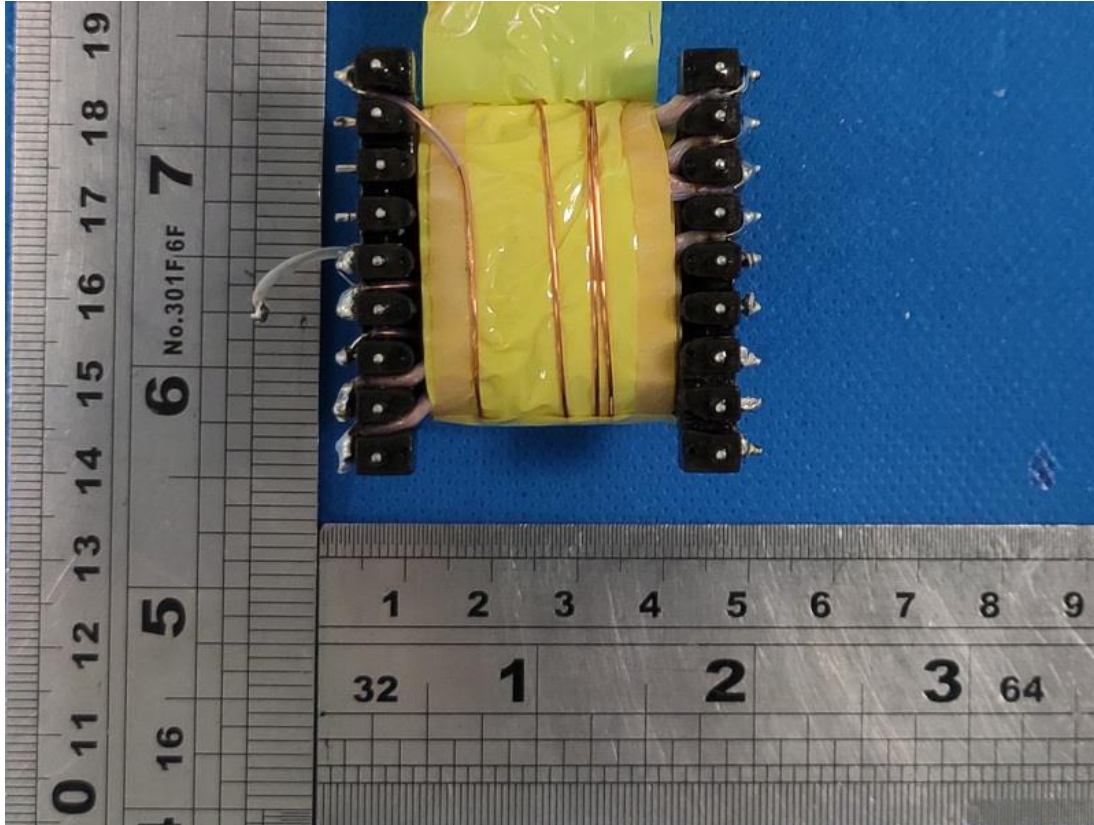




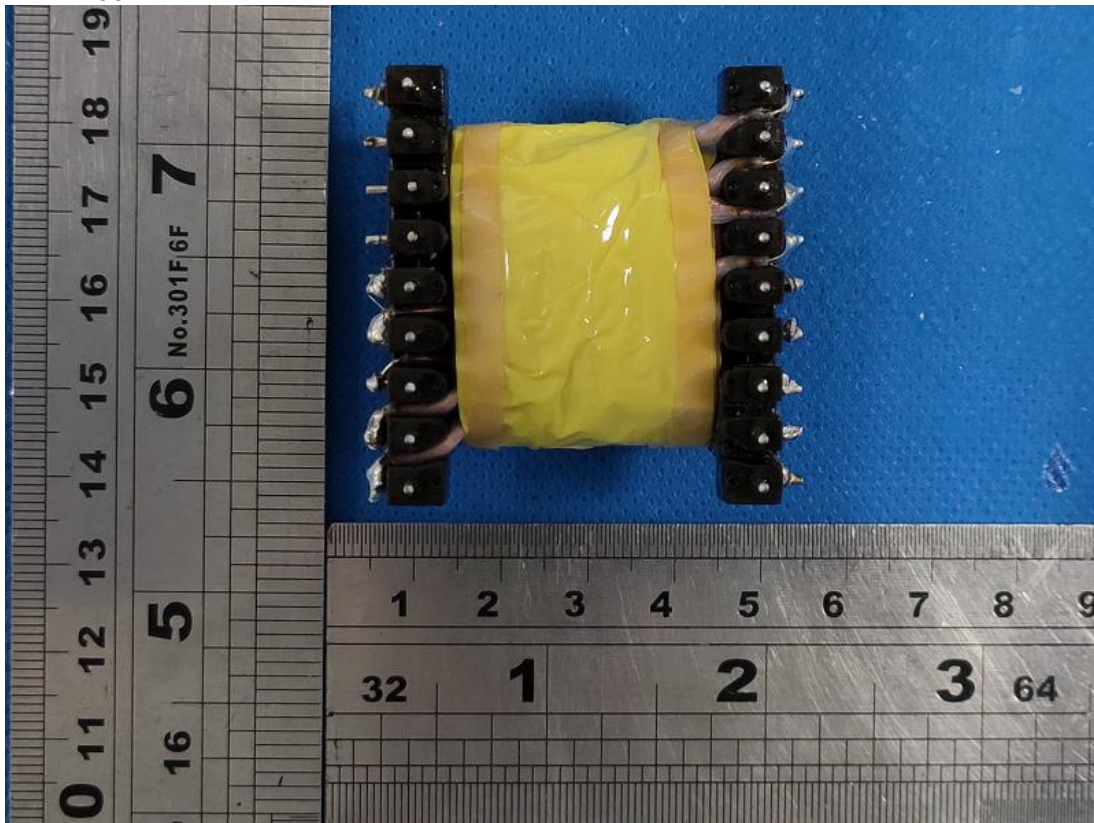
Product: LINE ARRAY SPEAKER SYSTEMS

Type Designation: L-ARRAY 18SA, L-ARRAY 28HA, L-ARRAY 18S, L-ARRAY 28H

Picture 55.



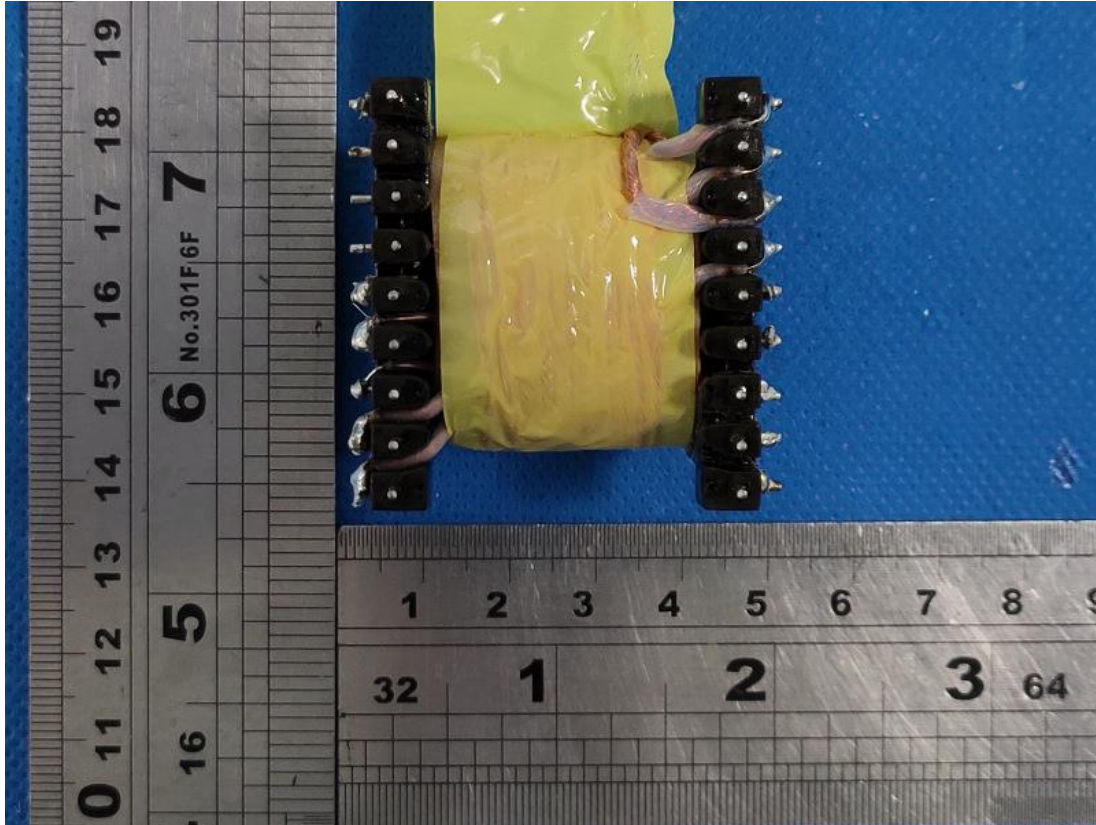
Picture 56.



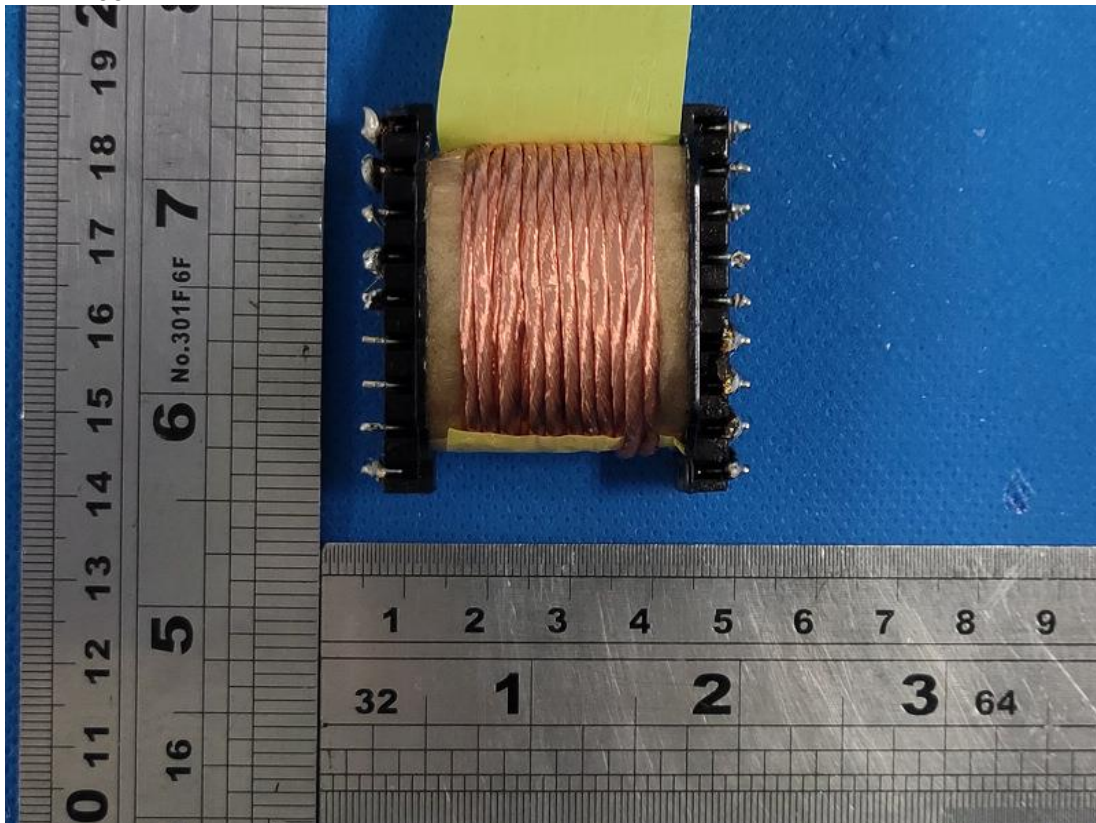
Product: LINE ARRAY SPEAKER SYSTEMS

Type Designation: L-ARRAY 18SA, L-ARRAY 28HA, L-ARRAY 18S, L-ARRAY 28H

Picture 57.



Picture 58.

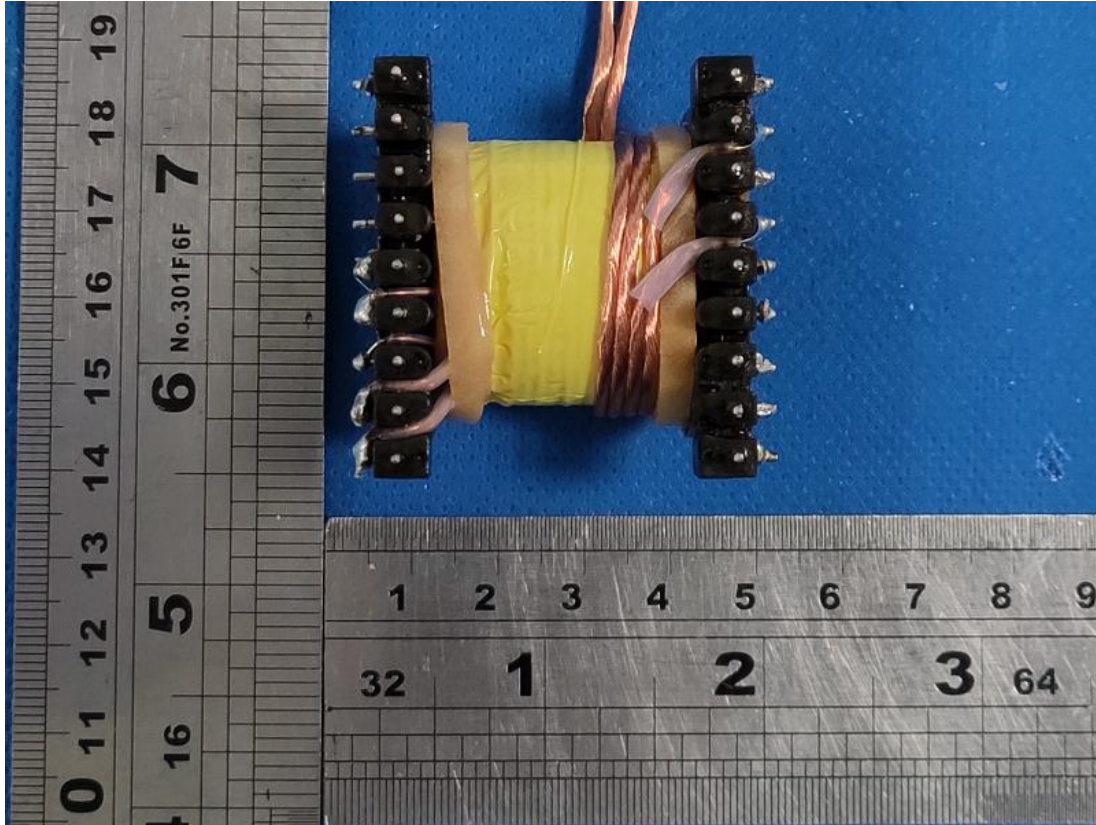




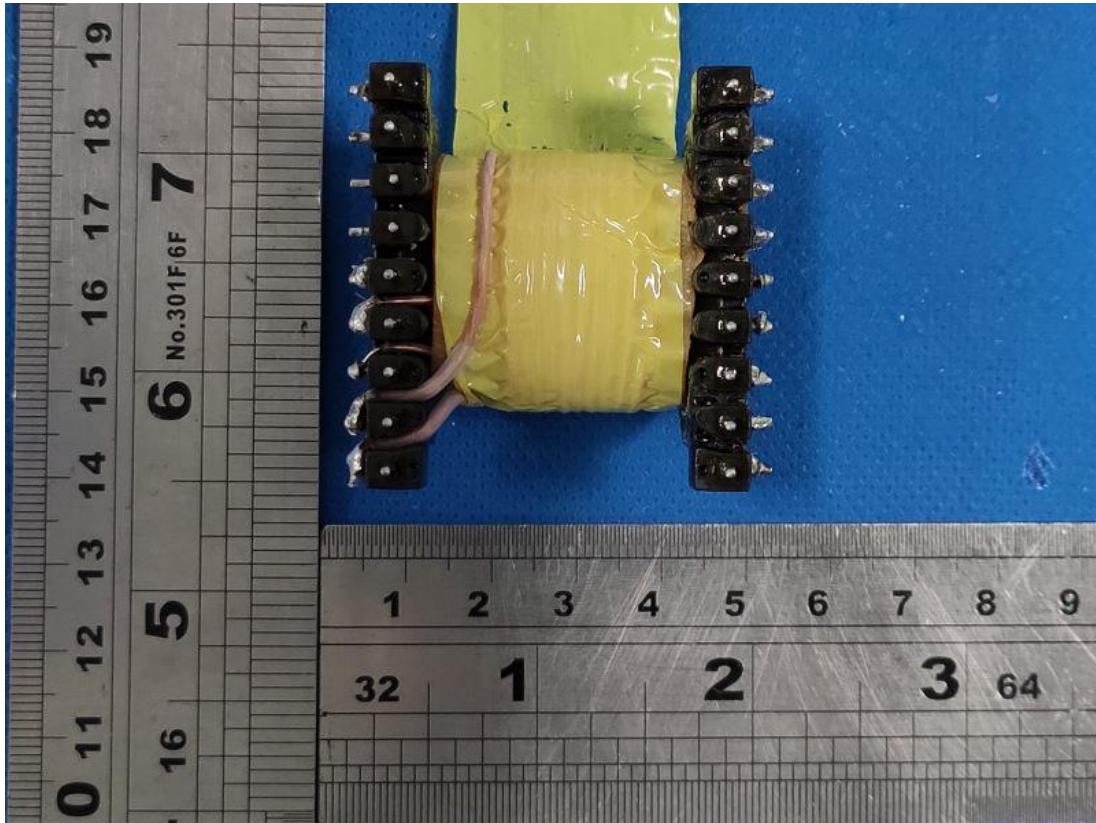
Product: LINE ARRAY SPEAKER SYSTEMS

Type Designation: L-ARRAY 18SA, L-ARRAY 28HA, L-ARRAY 18S, L-ARRAY 28H

Picture 59.



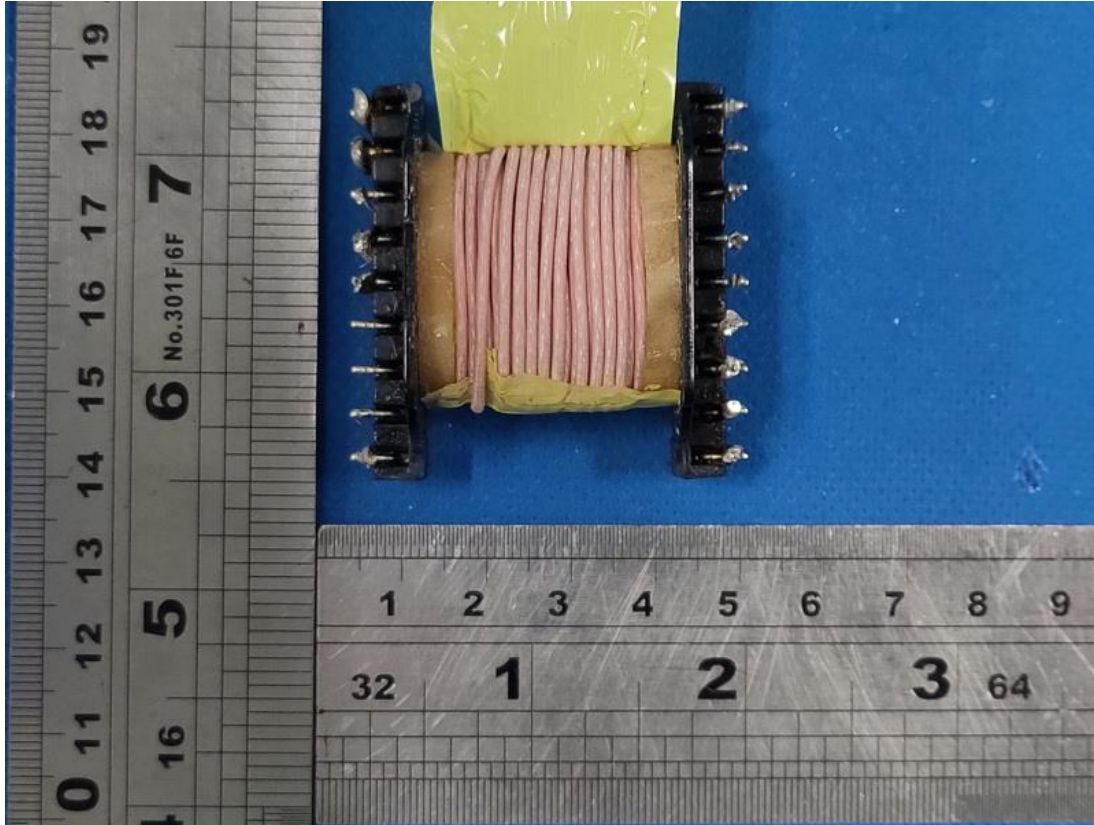
Picture 60.



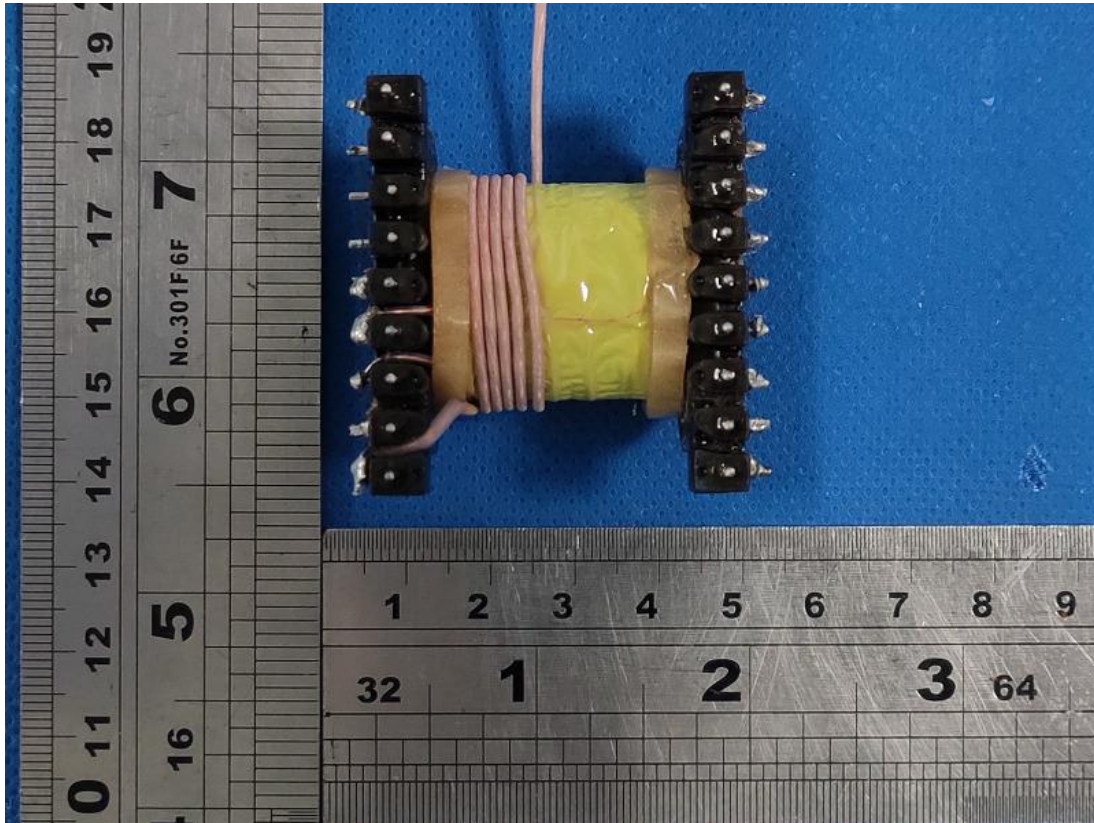
Product: LINE ARRAY SPEAKER SYSTEMS

Type Designation: L-ARRAY 18SA, L-ARRAY 28HA, L-ARRAY 18S, L-ARRAY 28H

Picture 61.



Picture 62.

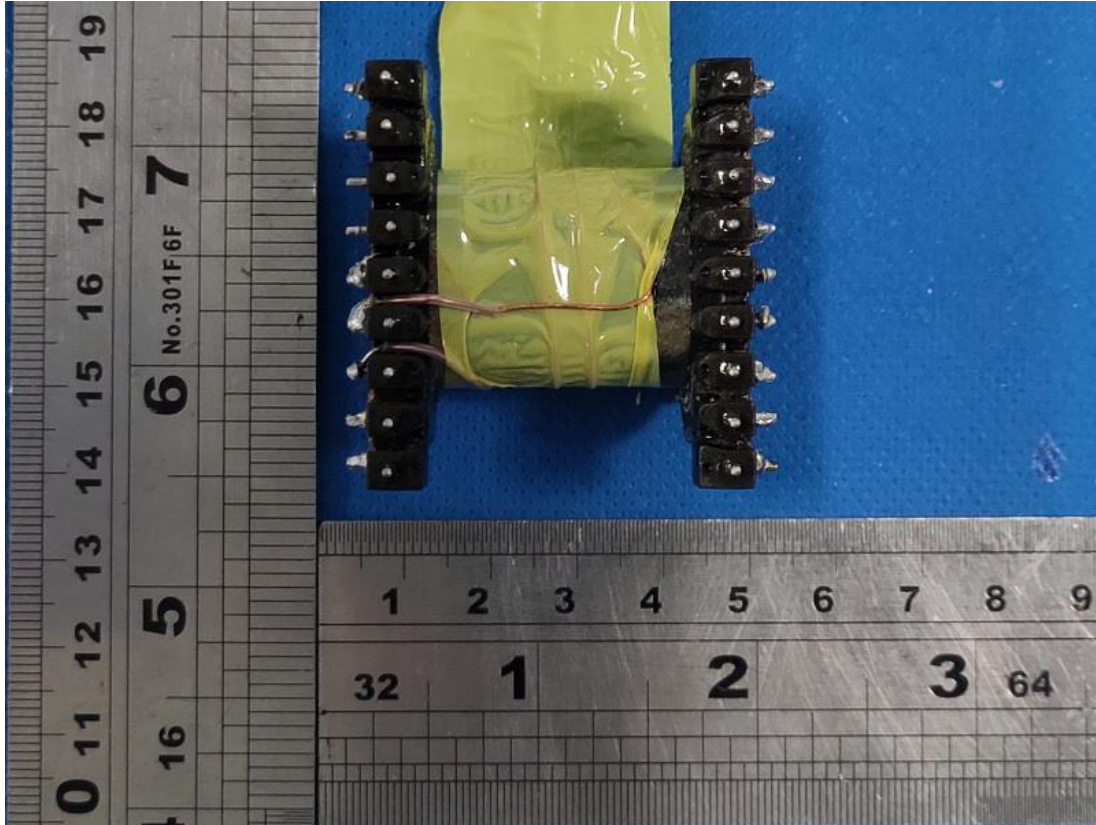




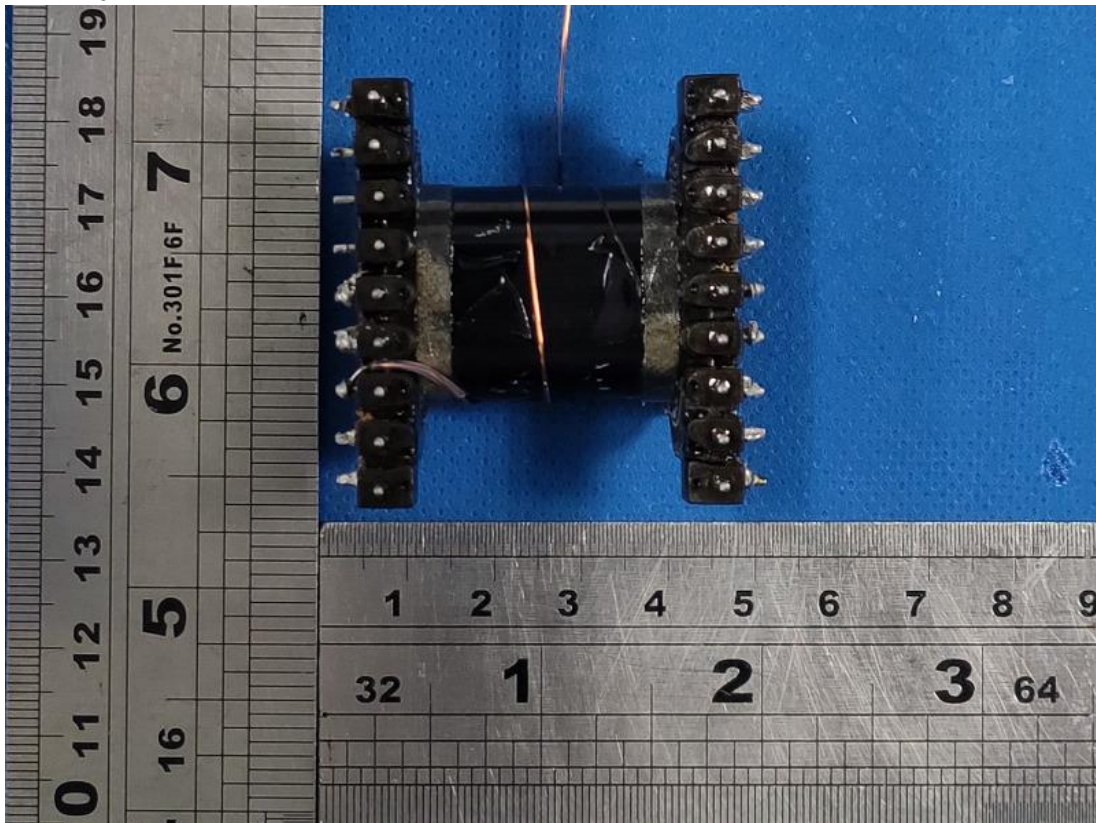
Product: LINE ARRAY SPEAKER SYSTEMS

Type Designation: L-ARRAY 18SA, L-ARRAY 28HA, L-ARRAY 18S, L-ARRAY 28H

Picture 63.



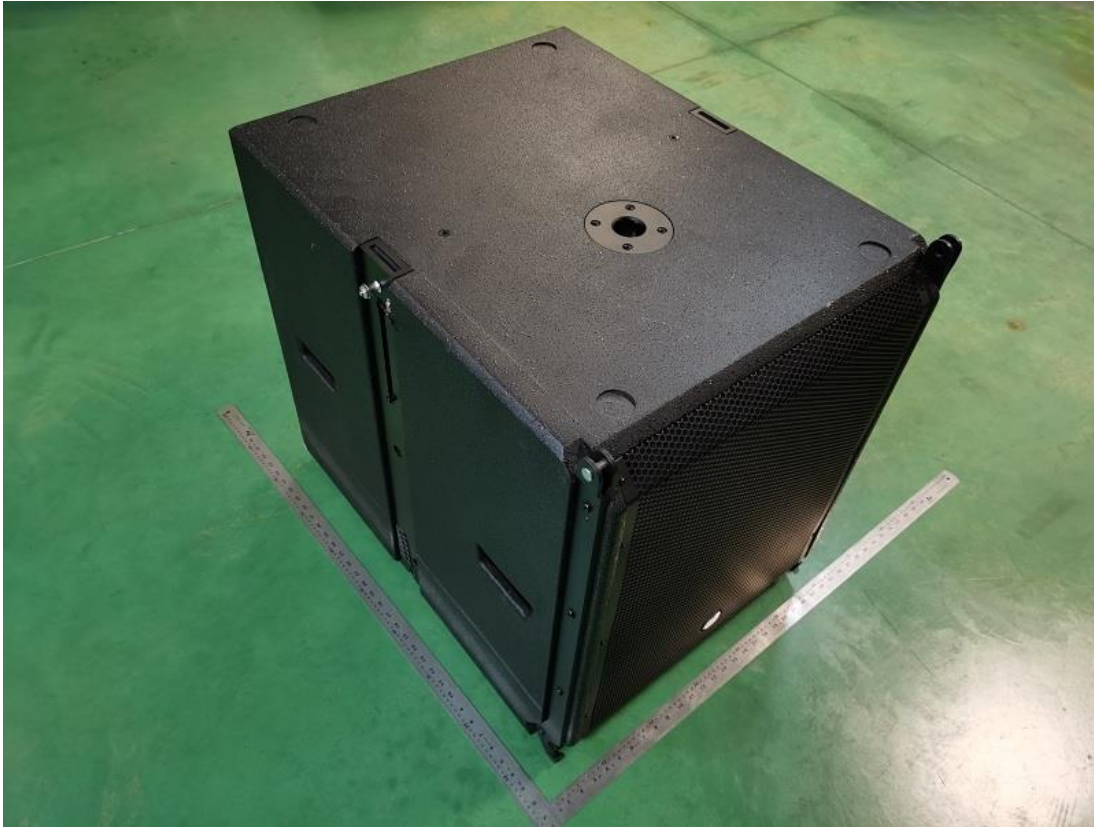
Picture 64.



Product: LINE ARRAY SPEAKER SYSTEMS

Type Designation: L-ARRAY 18SA, L-ARRAY 28HA, L-ARRAY 18S, L-ARRAY 28H

Picture 65.



Picture 66. Model L-ARRAY 18S

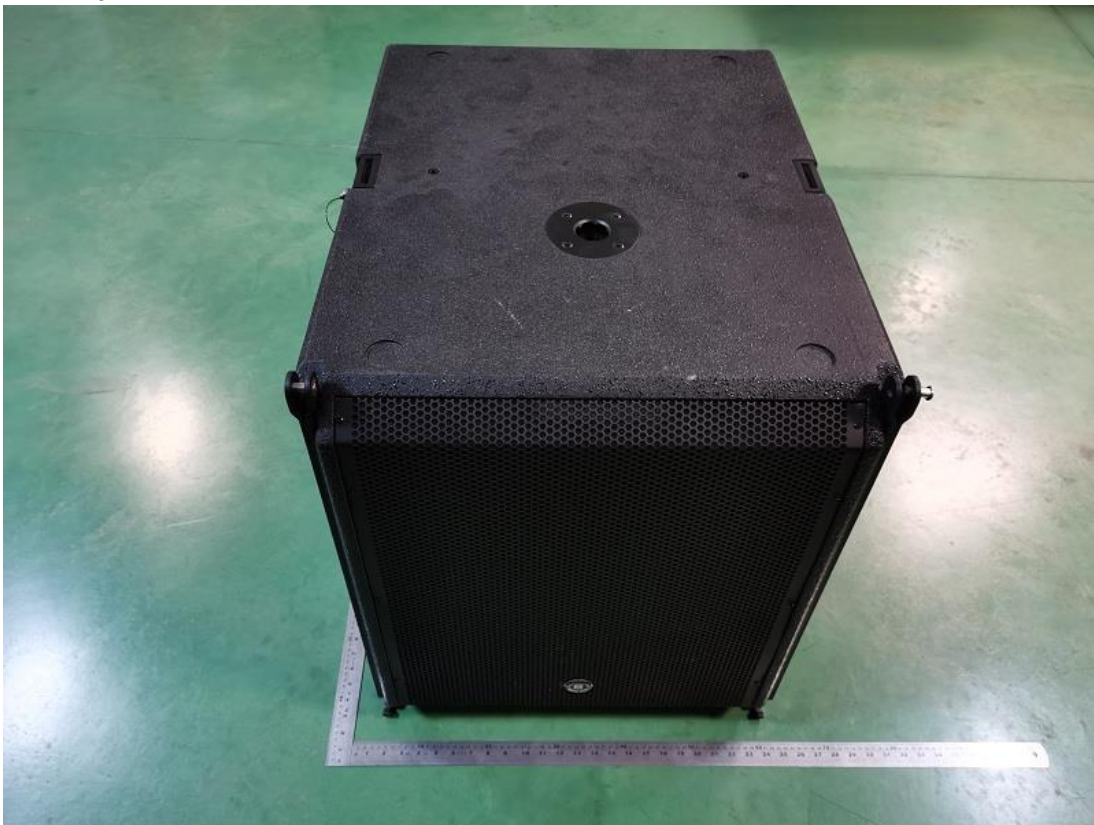


Product: LINE ARRAY SPEAKER SYSTEMS

Type Designation: L-ARRAY 18SA, L-ARRAY 28HA, L-ARRAY 18S, L-ARRAY 28H



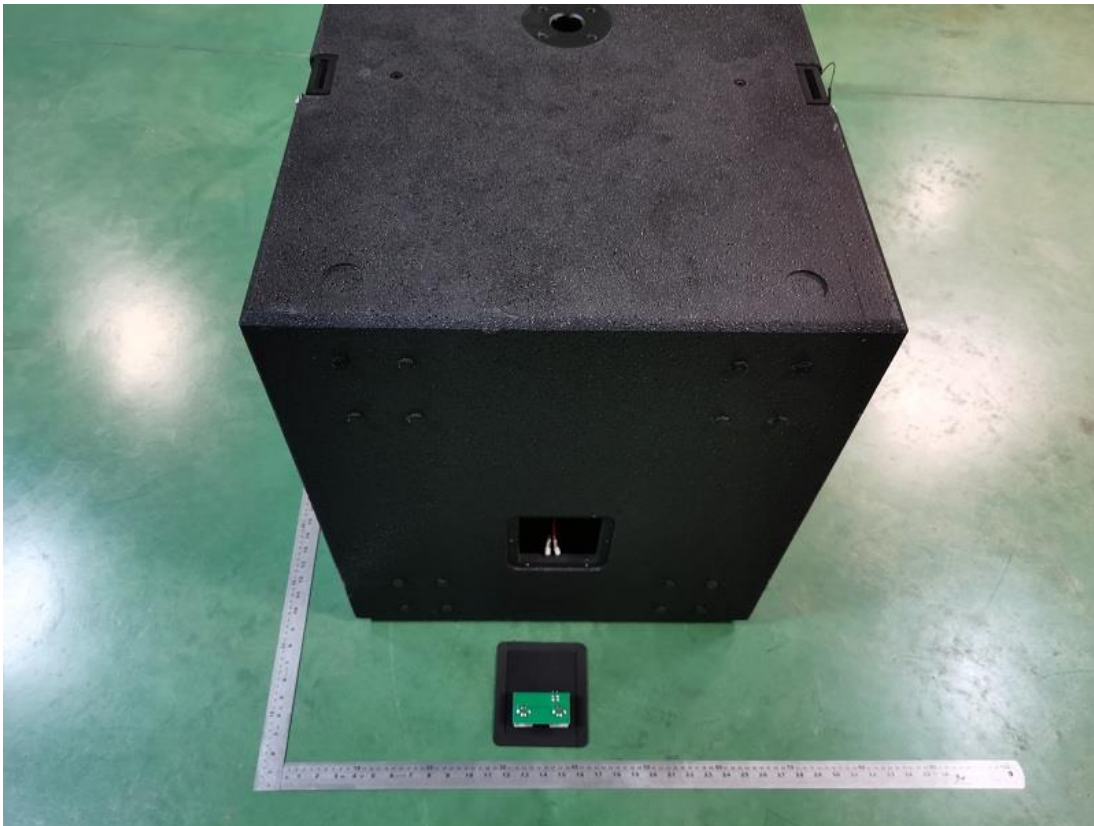
Picture 67.



Picture 68.

Product: LINE ARRAY SPEAKER SYSTEMS

Type Designation: L-ARRAY 18SA, L-ARRAY 28HA, L-ARRAY 18S, L-ARRAY 28H



Picture 69.

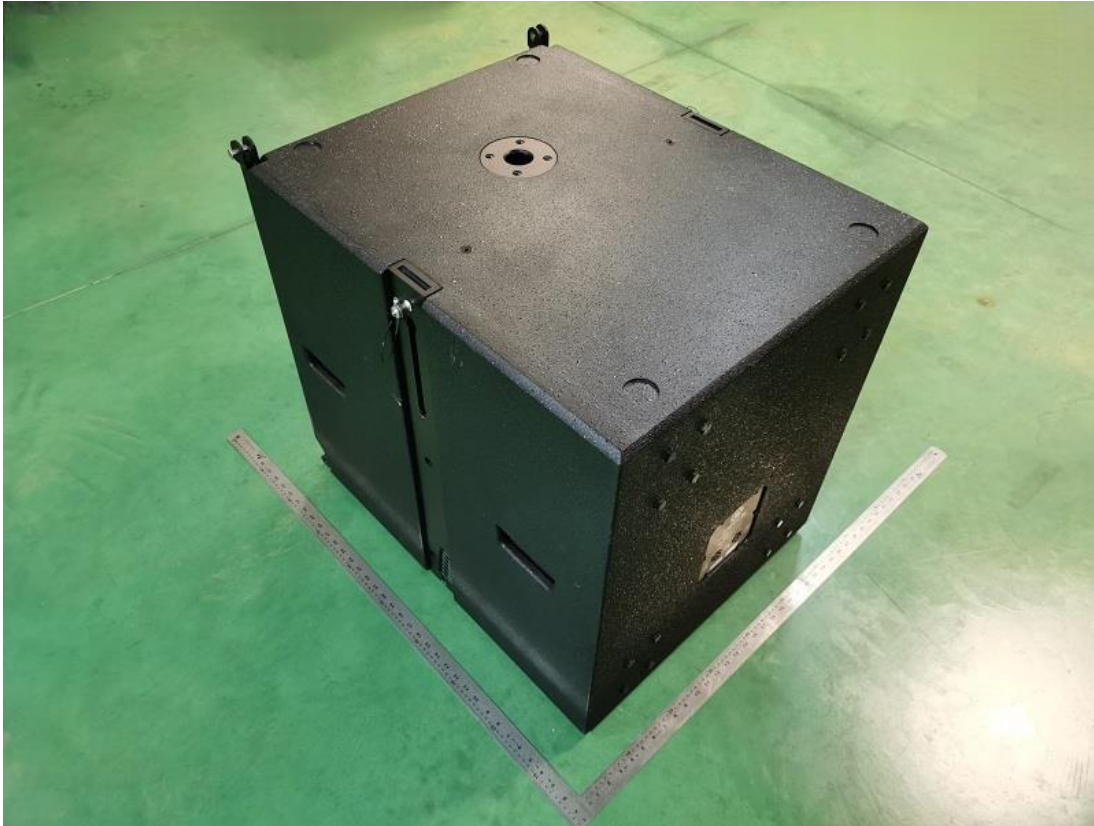


Picture 70.



Product: LINE ARRAY SPEAKER SYSTEMS

Type Designation: L-ARRAY 18SA, L-ARRAY 28HA, L-ARRAY 18S, L-ARRAY 28H



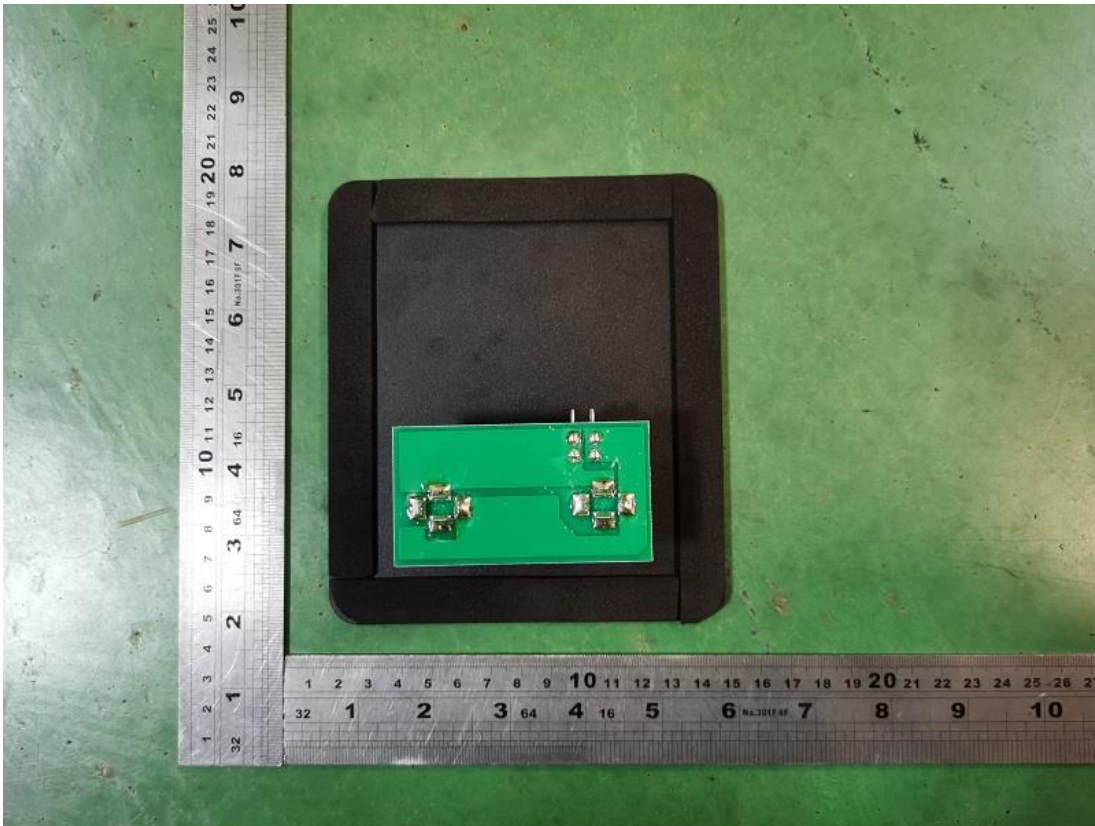
Picture 71.



Picture 72.

Product: LINE ARRAY SPEAKER SYSTEMS

Type Designation: L-ARRAY 18SA, L-ARRAY 28HA, L-ARRAY 18S, L-ARRAY 28H



Picture 73.



Picture 74. Model L-ARRAY 28H



Product: LINE ARRAY SPEAKER SYSTEMS

Type Designation: L-ARRAY 18SA, L-ARRAY 28HA, L-ARRAY 18S, L-ARRAY 28H



Picture 75.



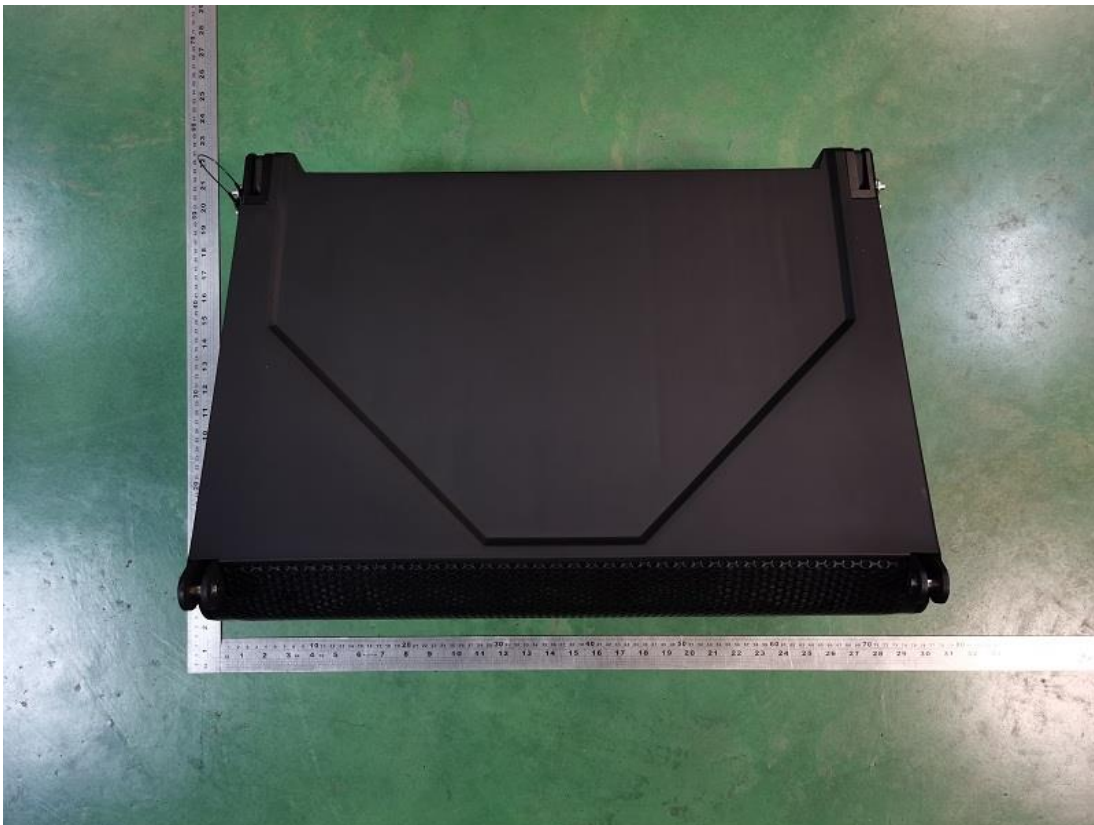
Picture 76.

Product: LINE ARRAY SPEAKER SYSTEMS

Type Designation: L-ARRAY 18SA, L-ARRAY 28HA, L-ARRAY 18S, L-ARRAY 28H



Picture 77.

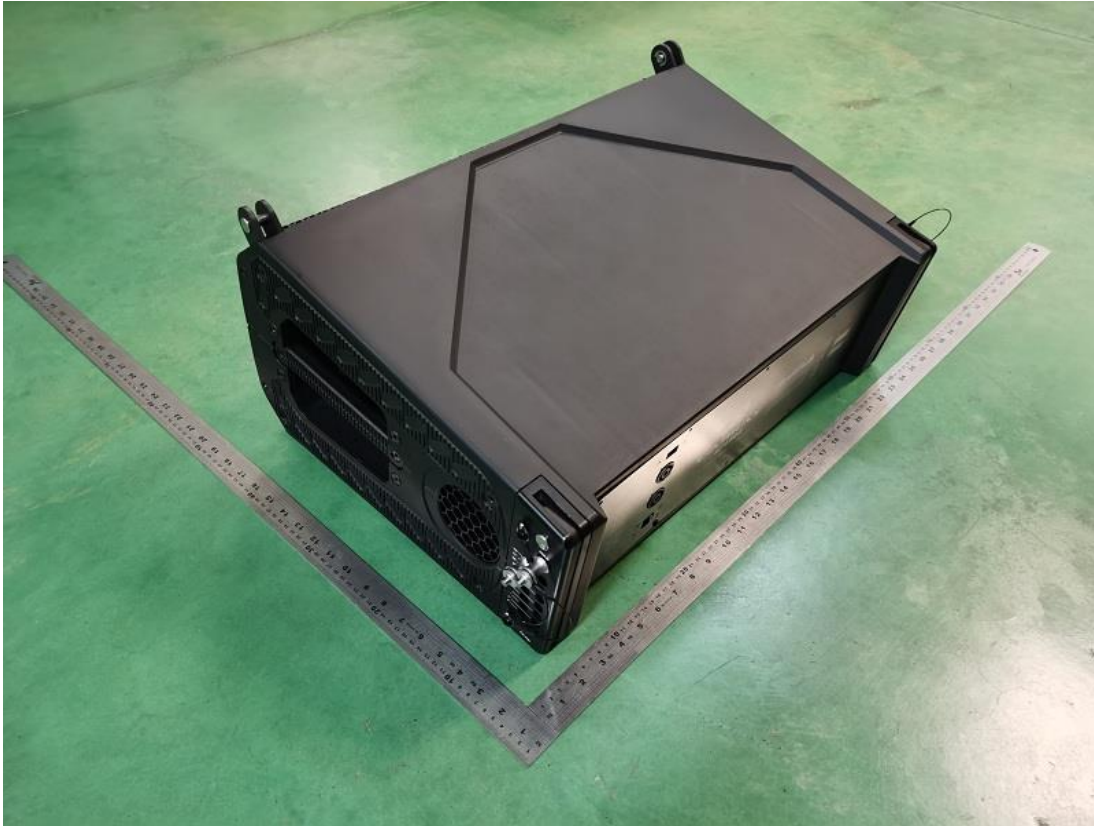


Picture 78.

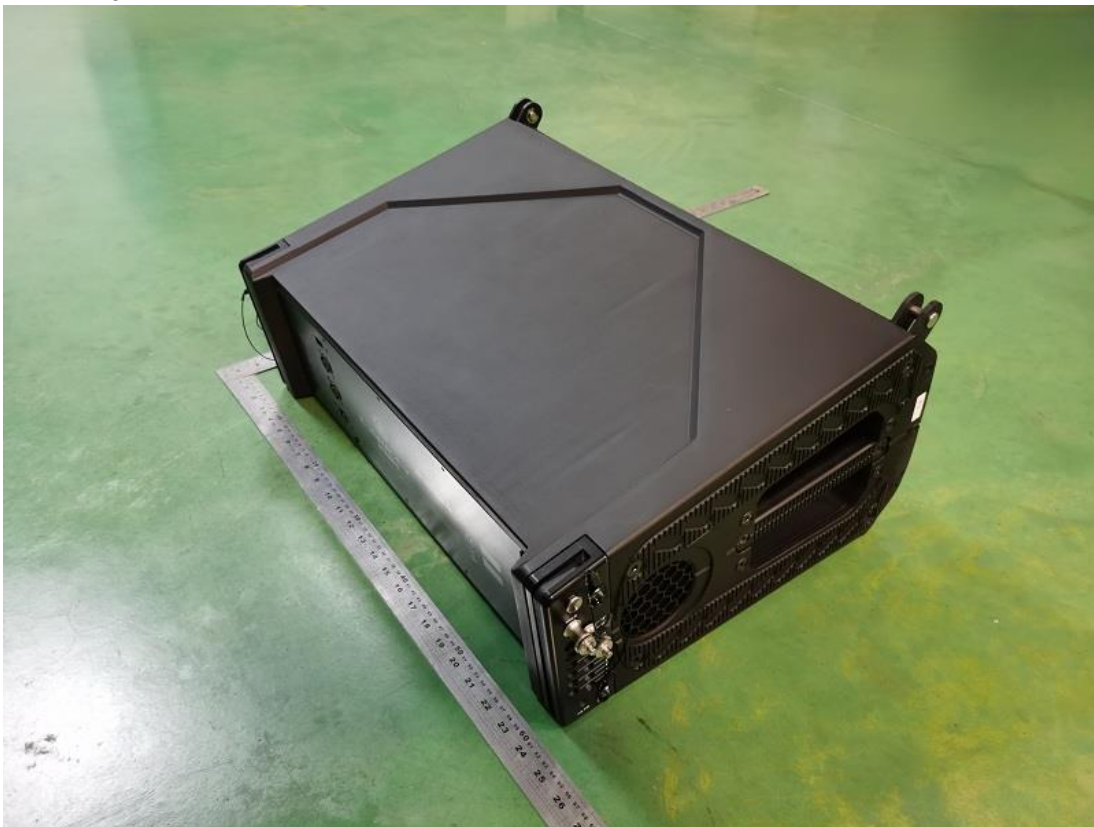


Product: LINE ARRAY SPEAKER SYSTEMS

Type Designation: L-ARRAY 18SA, L-ARRAY 28HA, L-ARRAY 18S, L-ARRAY 28H



Picture 79.



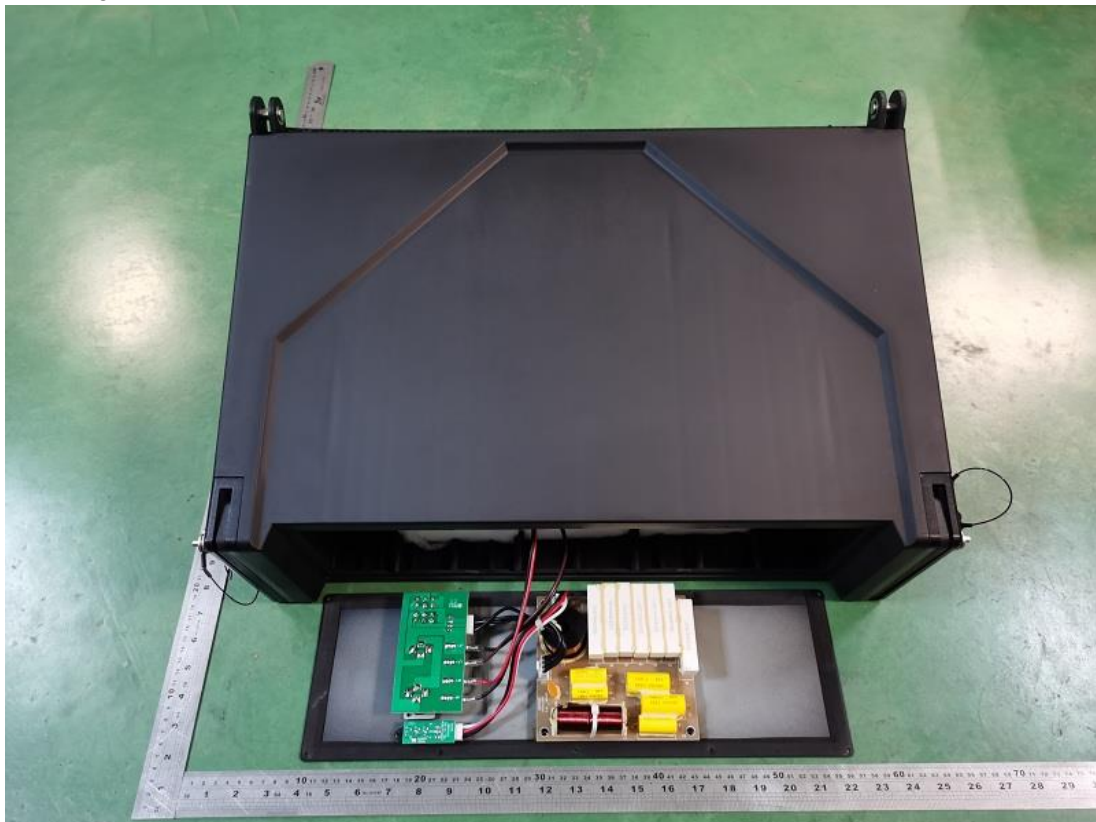
Picture 80.

Product: LINE ARRAY SPEAKER SYSTEMS

Type Designation: L-ARRAY 18SA, L-ARRAY 28HA, L-ARRAY 18S, L-ARRAY 28H



Picture 81.

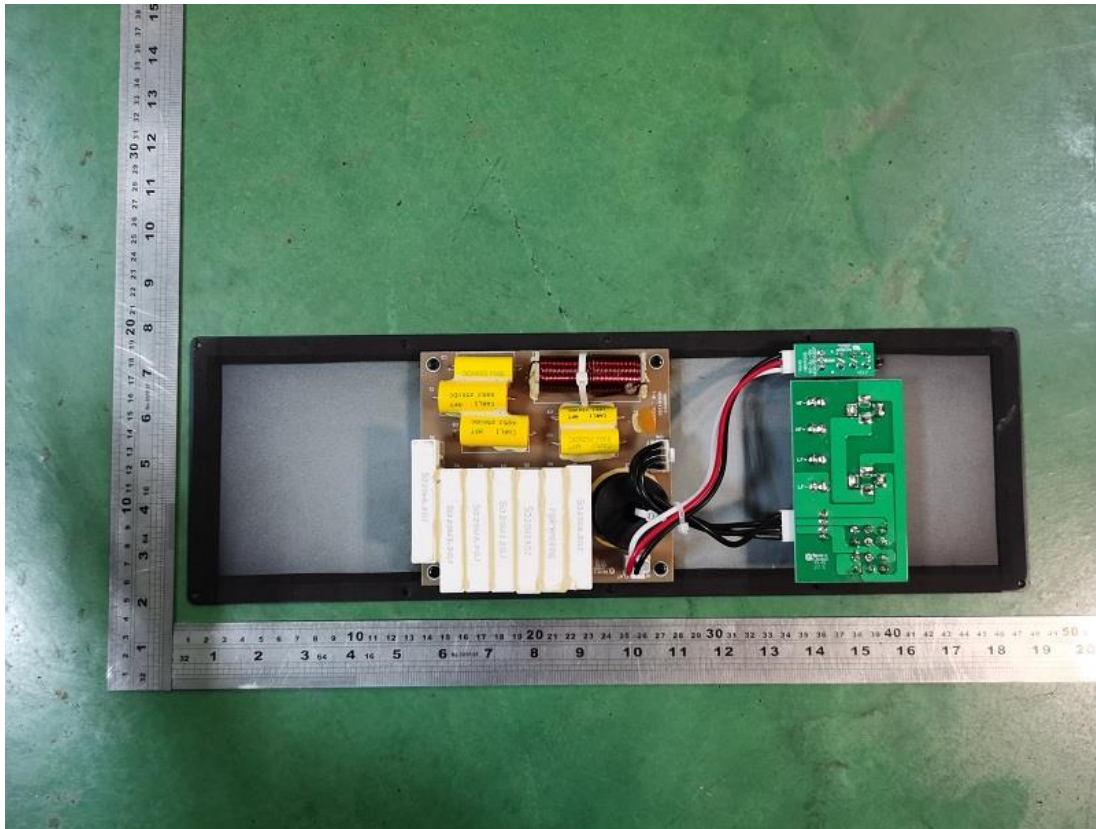


Picture 82.

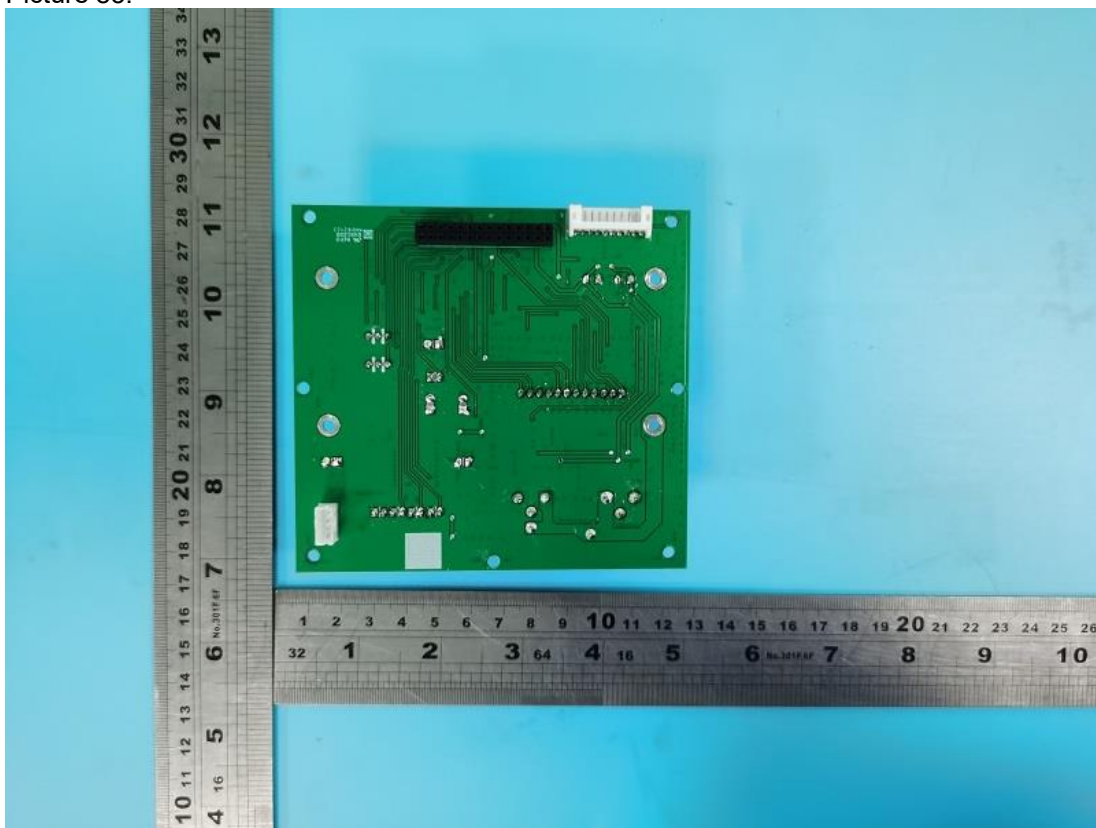


Product: LINE ARRAY SPEAKER SYSTEMS

Type Designation: L-ARRAY 18SA, L-ARRAY 28HA, L-ARRAY 18S, L-ARRAY 28H



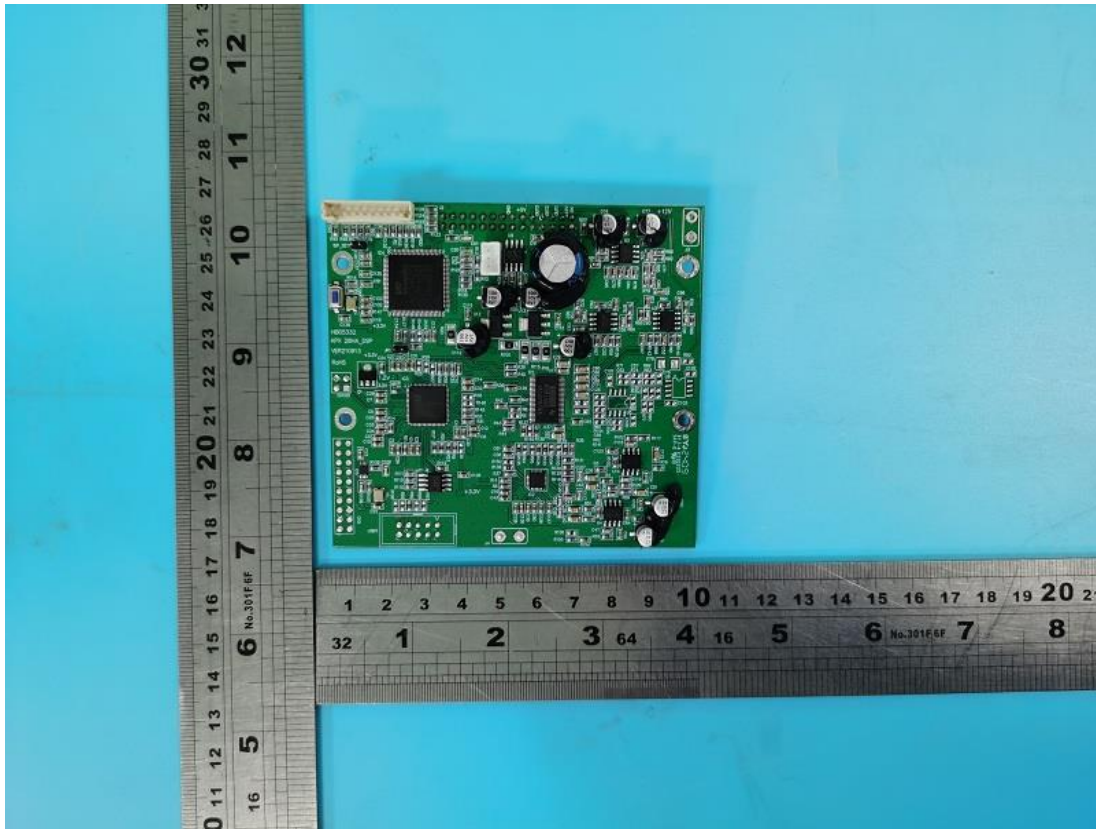
Picture 83.



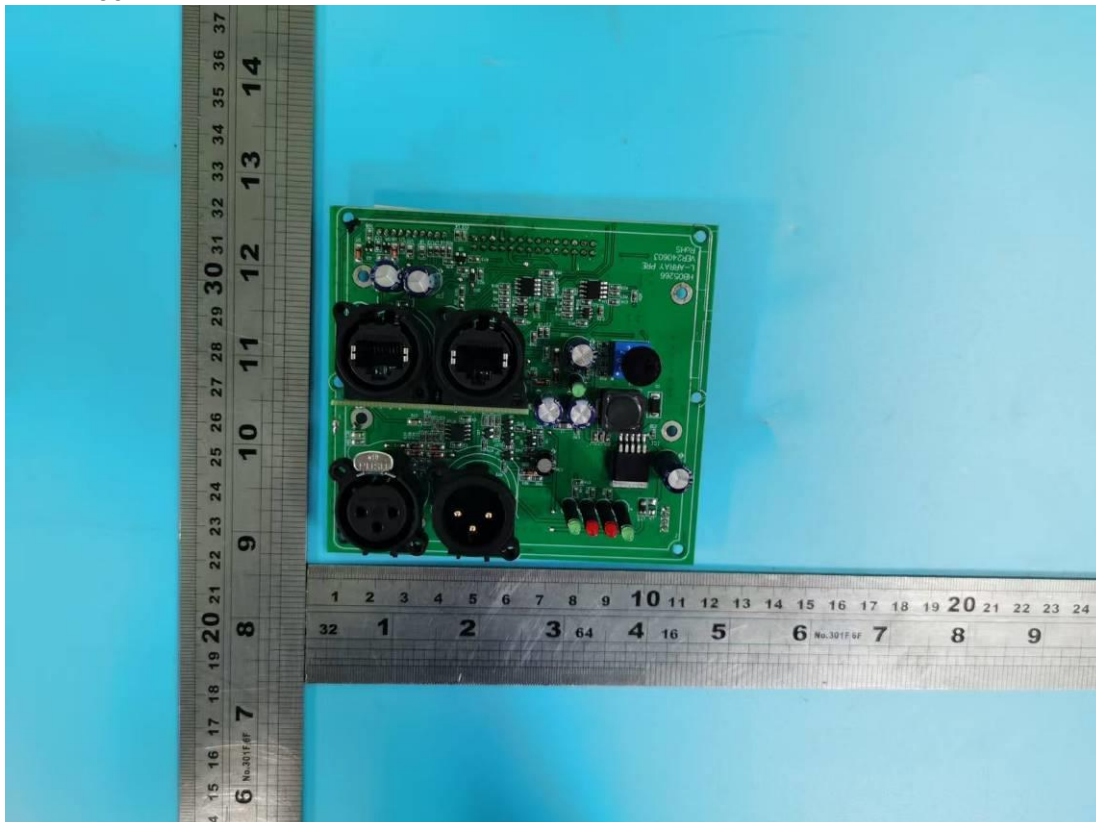
Picture 84. PC board

Product: LINE ARRAY SPEAKER SYSTEMS

Type Designation: L-ARRAY 18SA, L-ARRAY 28HA, L-ARRAY 18S, L-ARRAY 28H



Picture 85.

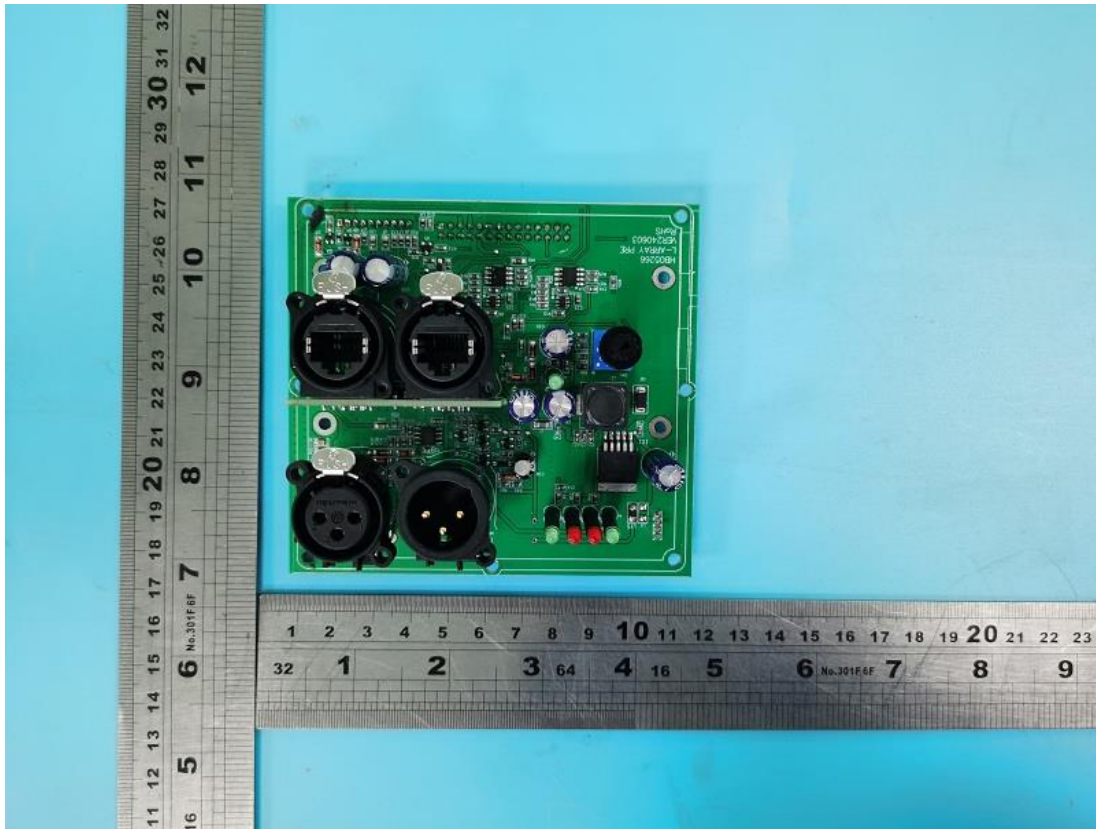


Picture 86.

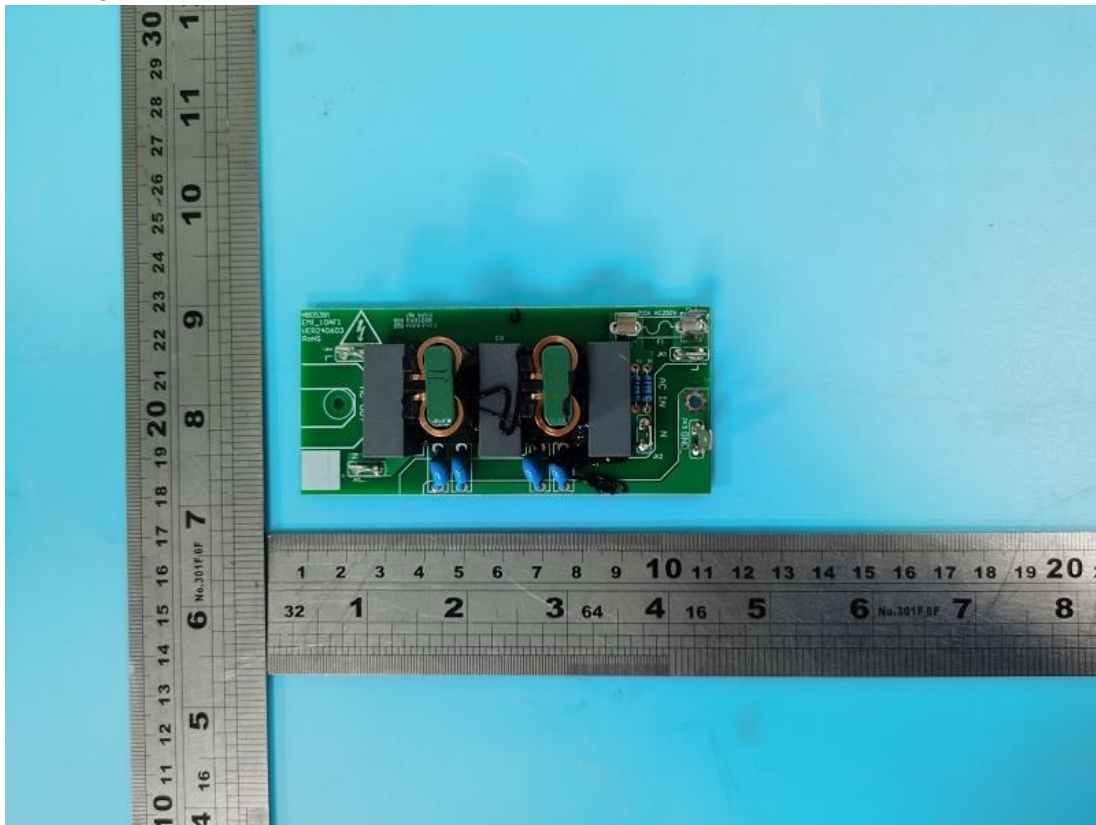


Product: LINE ARRAY SPEAKER SYSTEMS

Type Designation: L-ARRAY 18SA, L-ARRAY 28HA, L-ARRAY 18S, L-ARRAY 28H



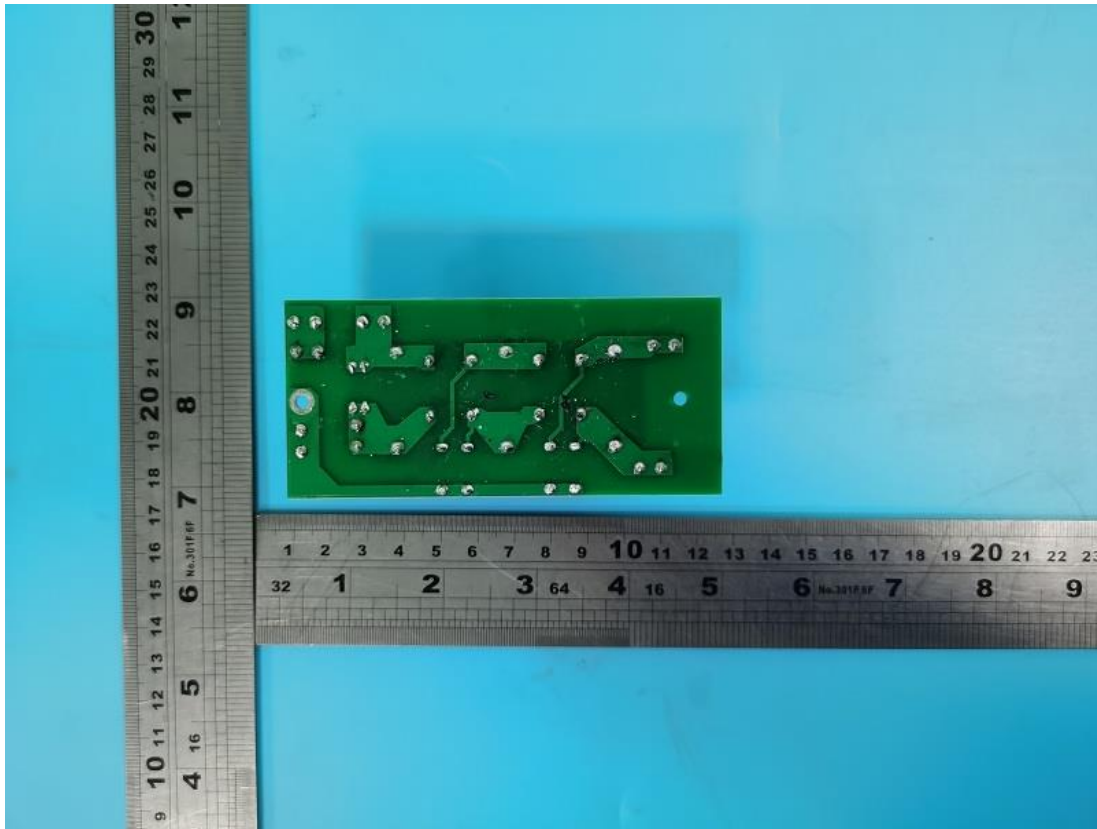
Picture 87.



Picture 88. EMI board

Product: LINE ARRAY SPEAKER SYSTEMS

Type Designation: L-ARRAY 18SA, L-ARRAY 28HA, L-ARRAY 18S, L-ARRAY 28H



Picture 89.